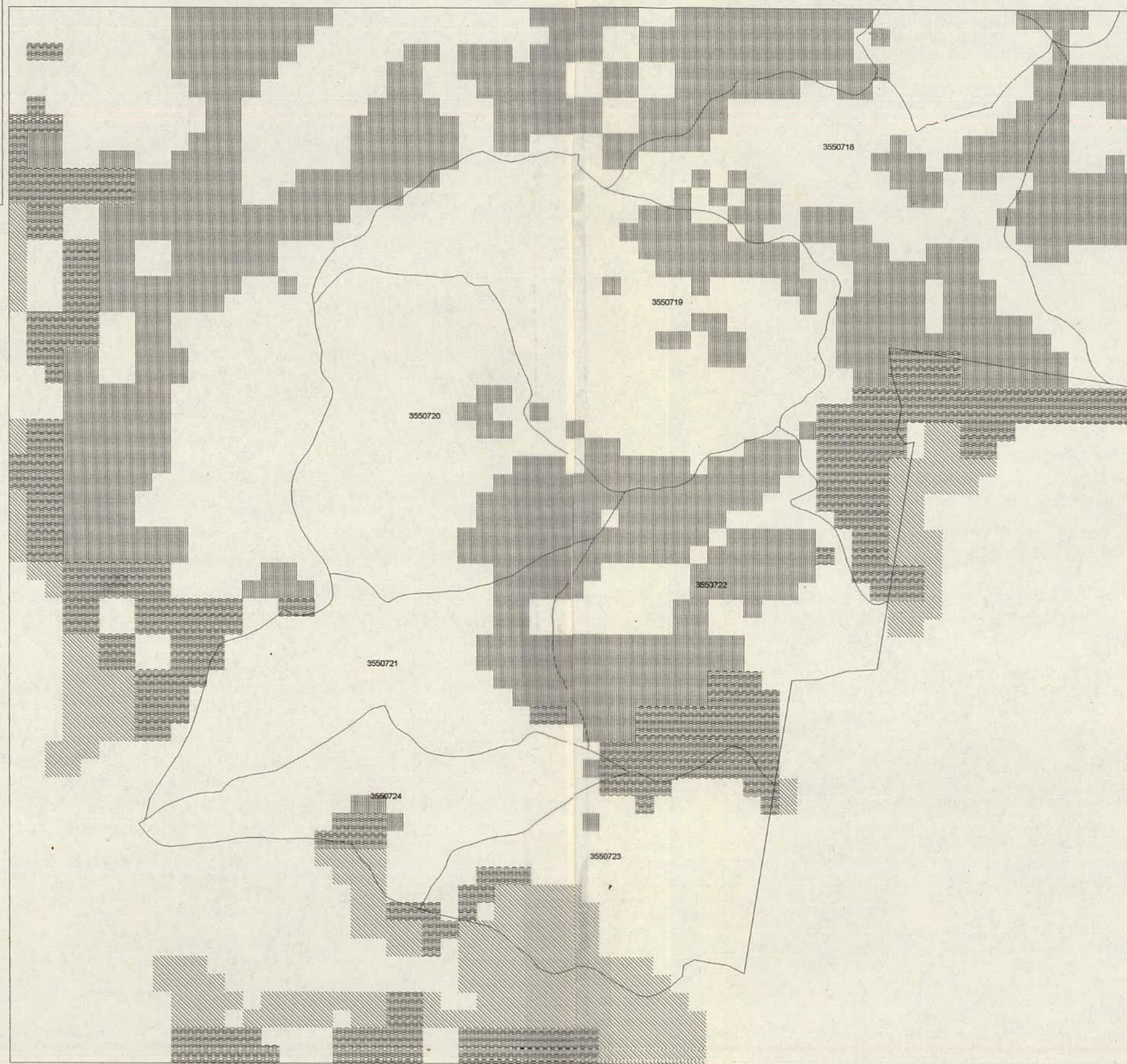


— Available Compartments

Yellow-bellied Glider 3-1
Yellow-bellied Glider 3-2
Yellow-bellied Glider 3-3
Yellow-bellied Glider 4-1
Yellow-bellied Glider 4-2
Yellow-bellied Glider 4-3
Yellow-bellied Glider 5-1
Yellow-bellied Glider 5-2
Yellow-bellied Glider 5-3

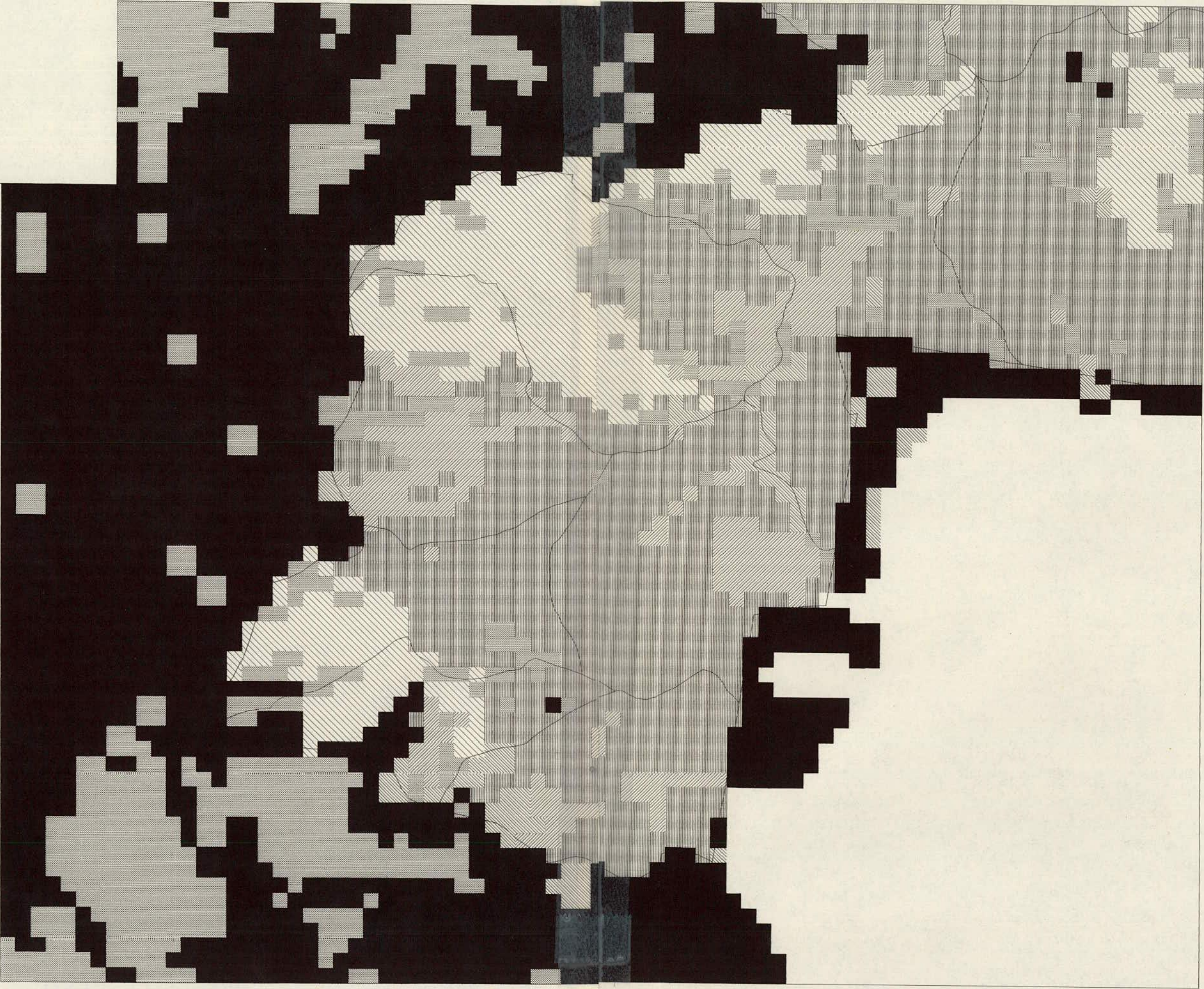
— Major Roads

— Negotiation Regions



YBG

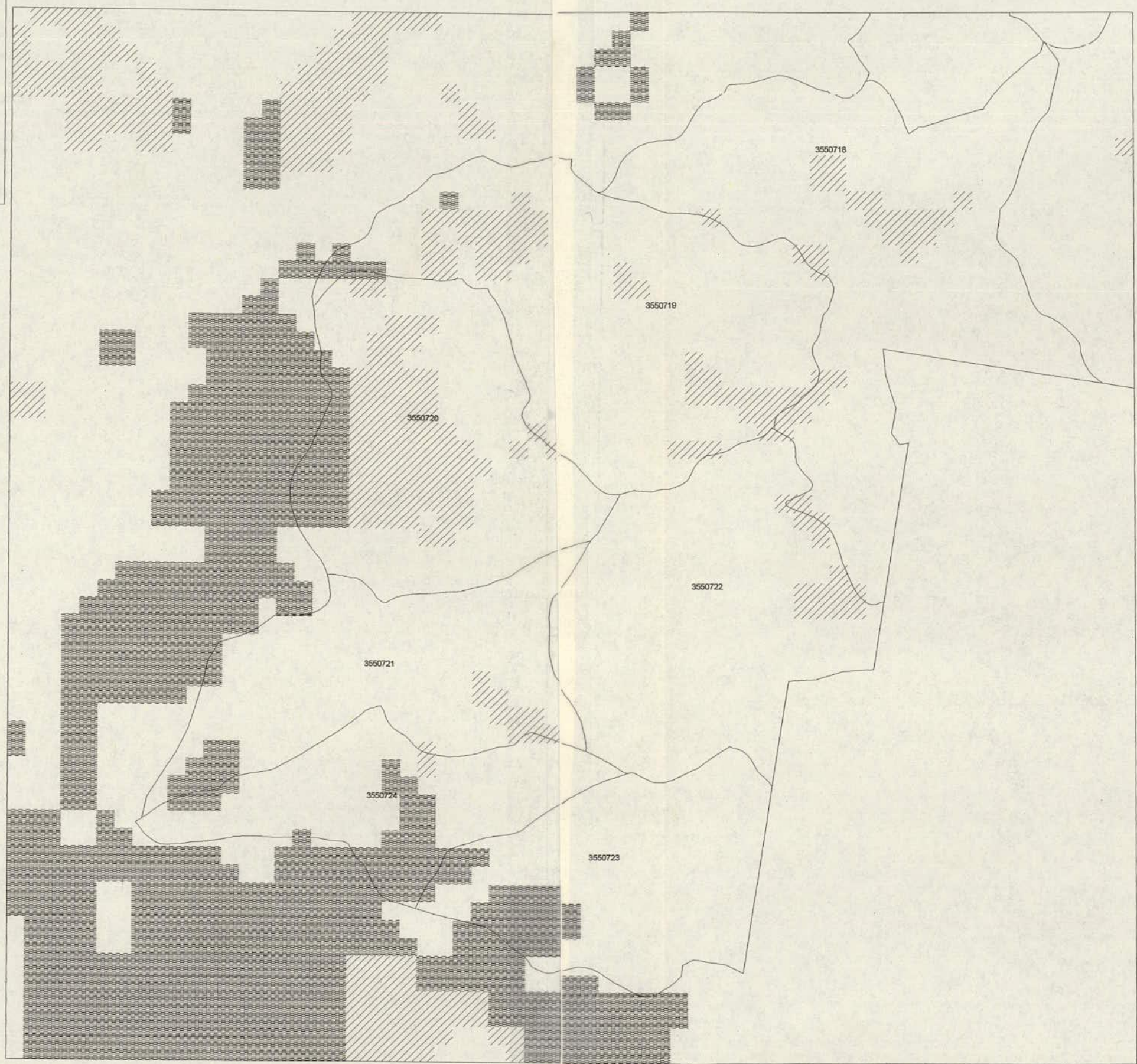
- Available Compartments
- Rainforest
 - Old Growth
 - Disturbed Old Growth
 - Mature
 - Disturbed Mature
 - Young
 - Not determined
- Major Roads
- Negotiation Regions



— Available Compartments

- Long-nosed Potoroo 4-1
- Long-nosed Potoroo 4-2
- Long-nosed Potoroo 4-3
- Long-nosed Potoroo 5-1
- Long-nosed Potoroo 5-2
- Long-nosed Potoroo 5-3
- Long-nosed Potoroo 6-1
- Long-nosed Potoroo 6-2
- Long-nosed Potoroo 6-3

— Major Roads
— Negotiation Regions

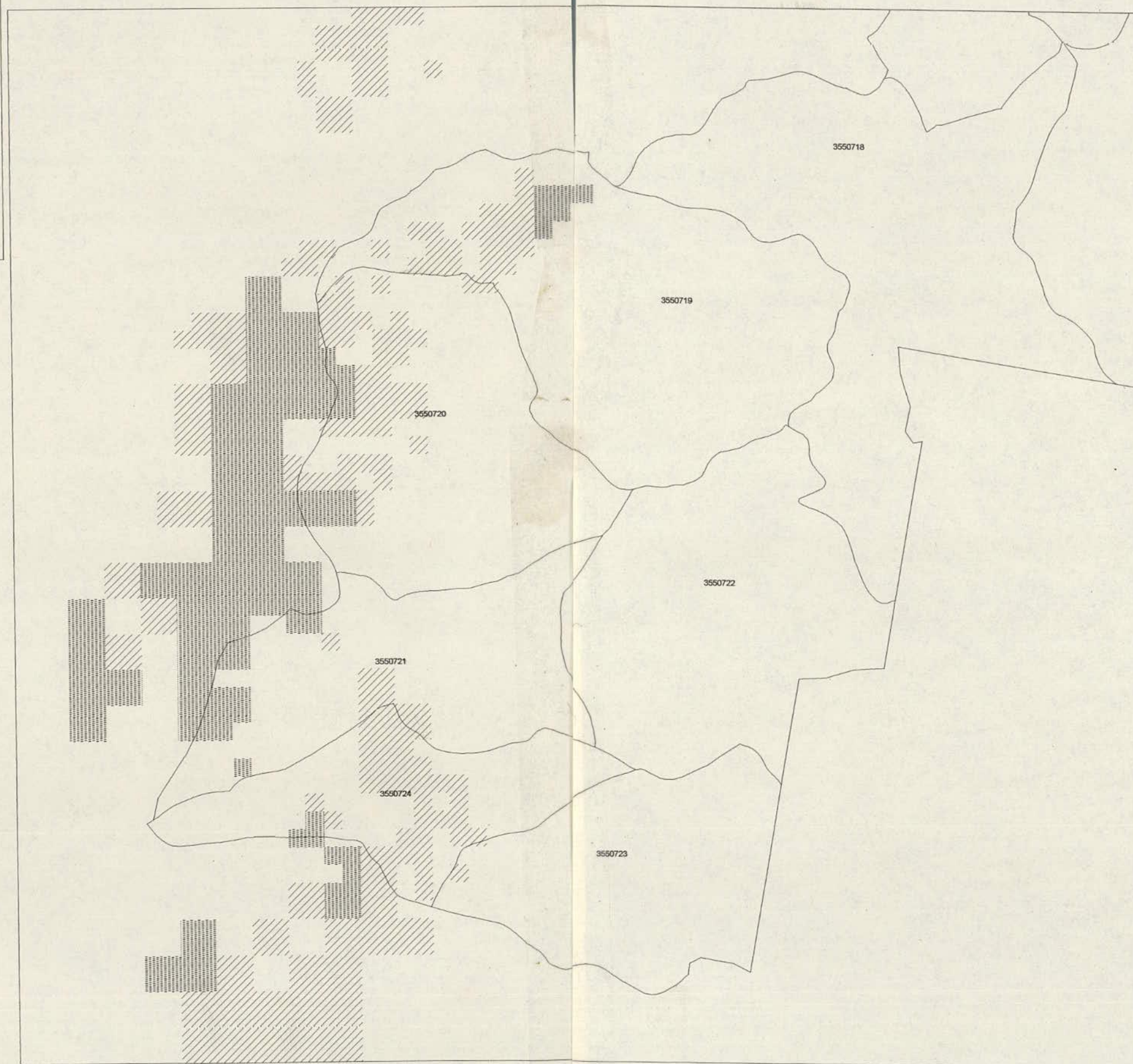


LN Potoroo

Available Compartments

- Parma Wallaby 4-1
- Parma Wallaby 4-2
- Parma Wallaby 4-3
- Parma Wallaby 5-1
- Parma Wallaby 5-2
- Parma Wallaby 5-3
- Parma Wallaby 6-1
- Parma Wallaby 6-2
- Parma Wallaby 6-3
- Parma Wallaby 7-1
- Parma Wallaby 7-2
- Parma Wallaby 7-3

Major Roads
Negotiation Regions



Parma Wallaby

Available Compartments

- Masked Owl 1-1
- Masked Owl 1-2
- Masked Owl 1-3
- Masked Owl 2-1
- Masked Owl 2-2
- Masked Owl 2-3
- Masked Owl 3-1
- Masked Owl 3-2
- Masked Owl 3-3
- Masked Owl 4-1
- Masked Owl 4-2
- Masked Owl 4-3

Major Roads

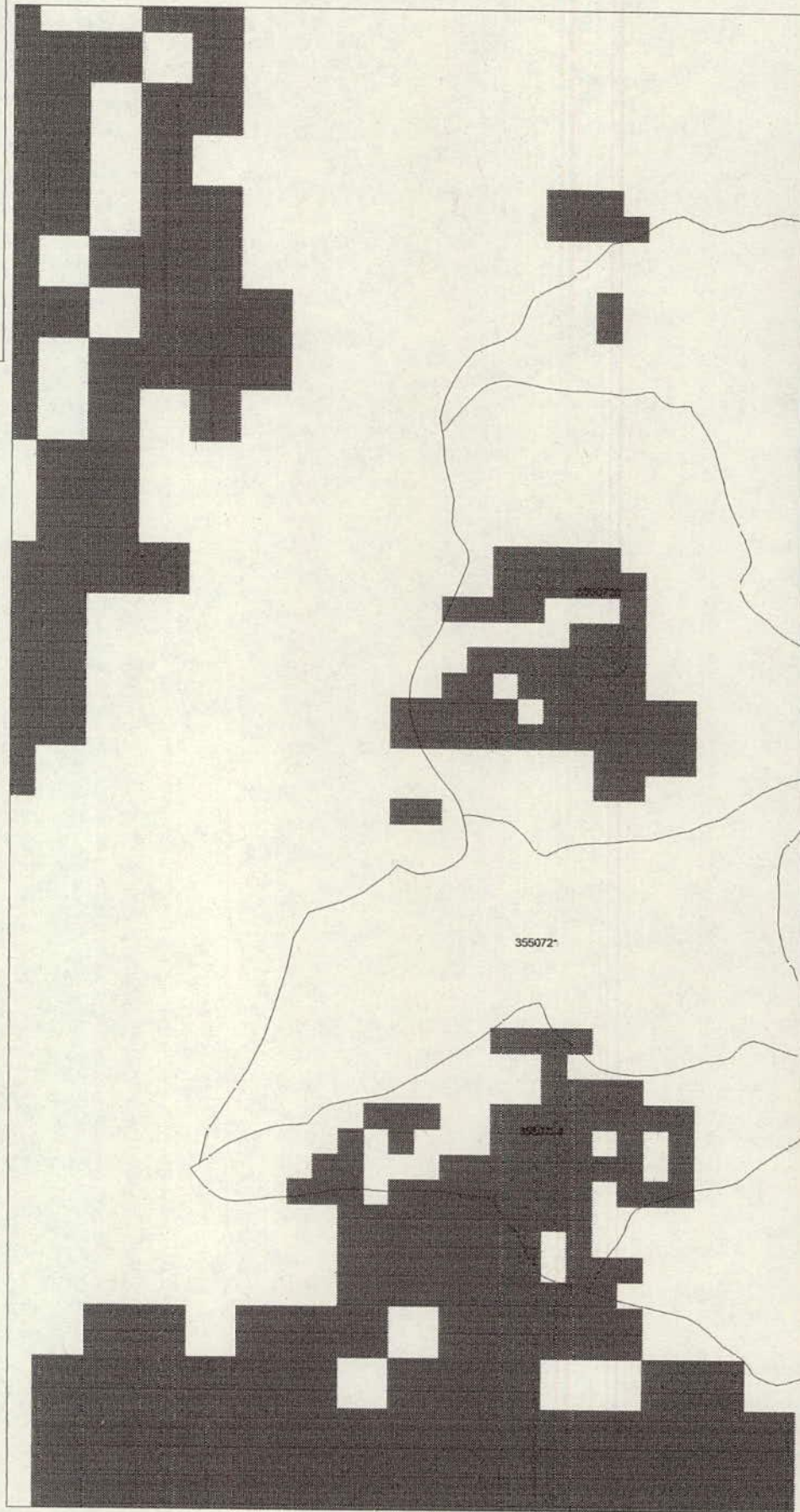
Negotiation Regions



— Available Compartments

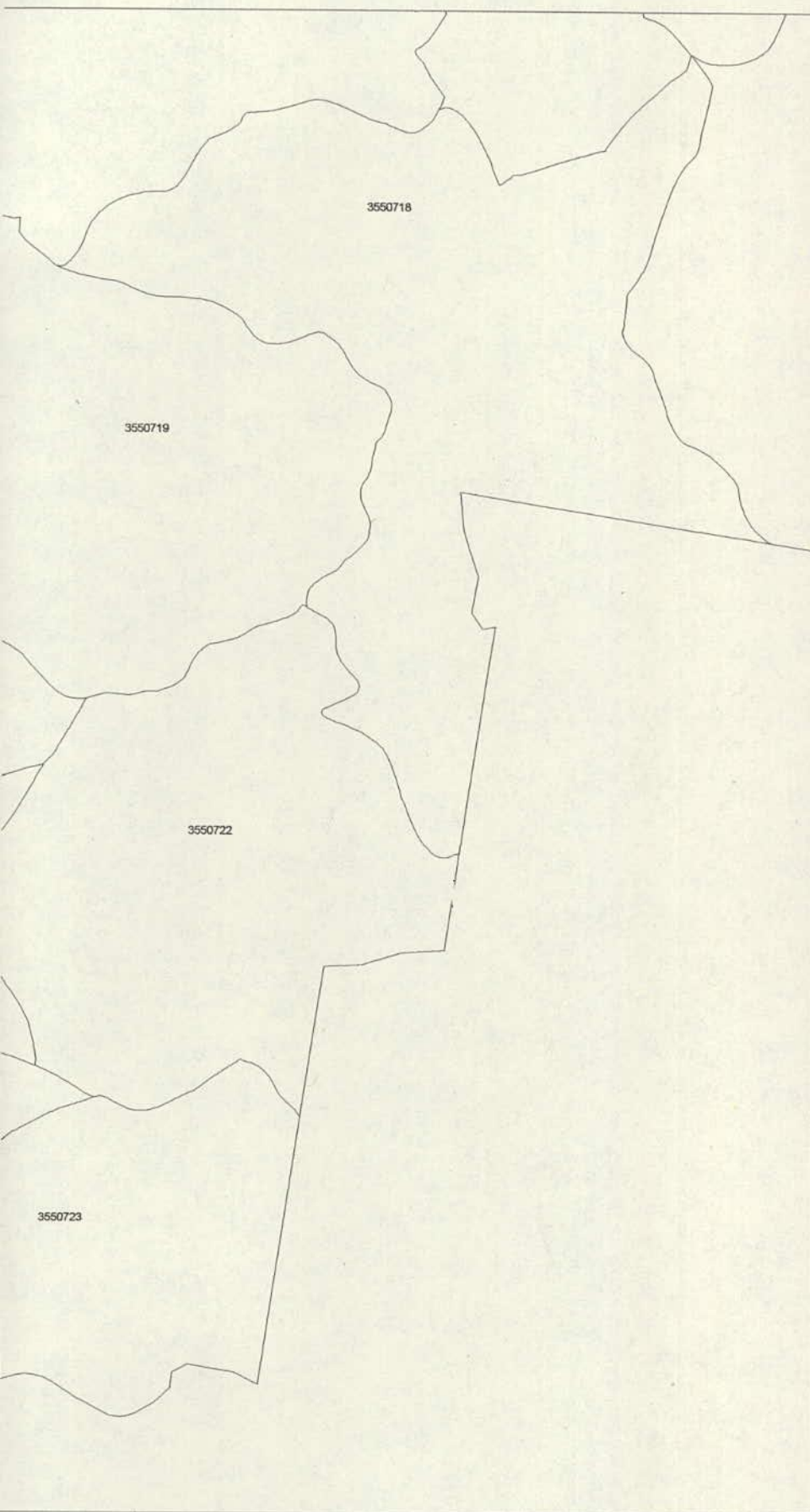
- Sooty Owl 1-1
- Sooty Owl 1-2
- Sooty Owl 1-3
- Sooty Owl 2-1
- Sooty Owl 2-2
- Sooty Owl 2-3
- Sooty Owl 3-1
- Sooty Owl 3-2
- Sooty Owl 3-3
- Sooty Owl 4-1
- Sooty Owl 4-2
- Sooty Owl 4-3

- Major Roads
- Negotiation Regions



5

50

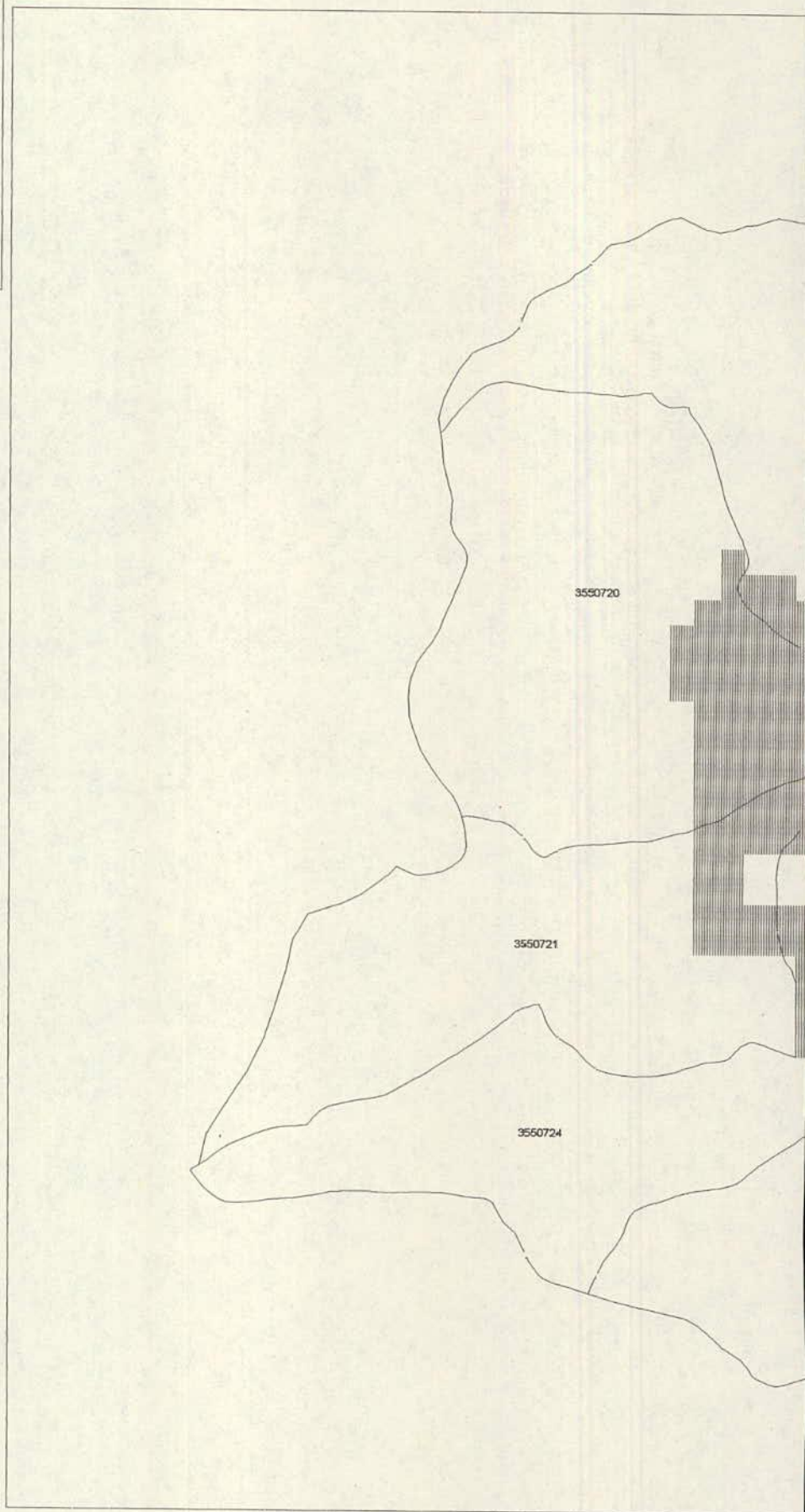


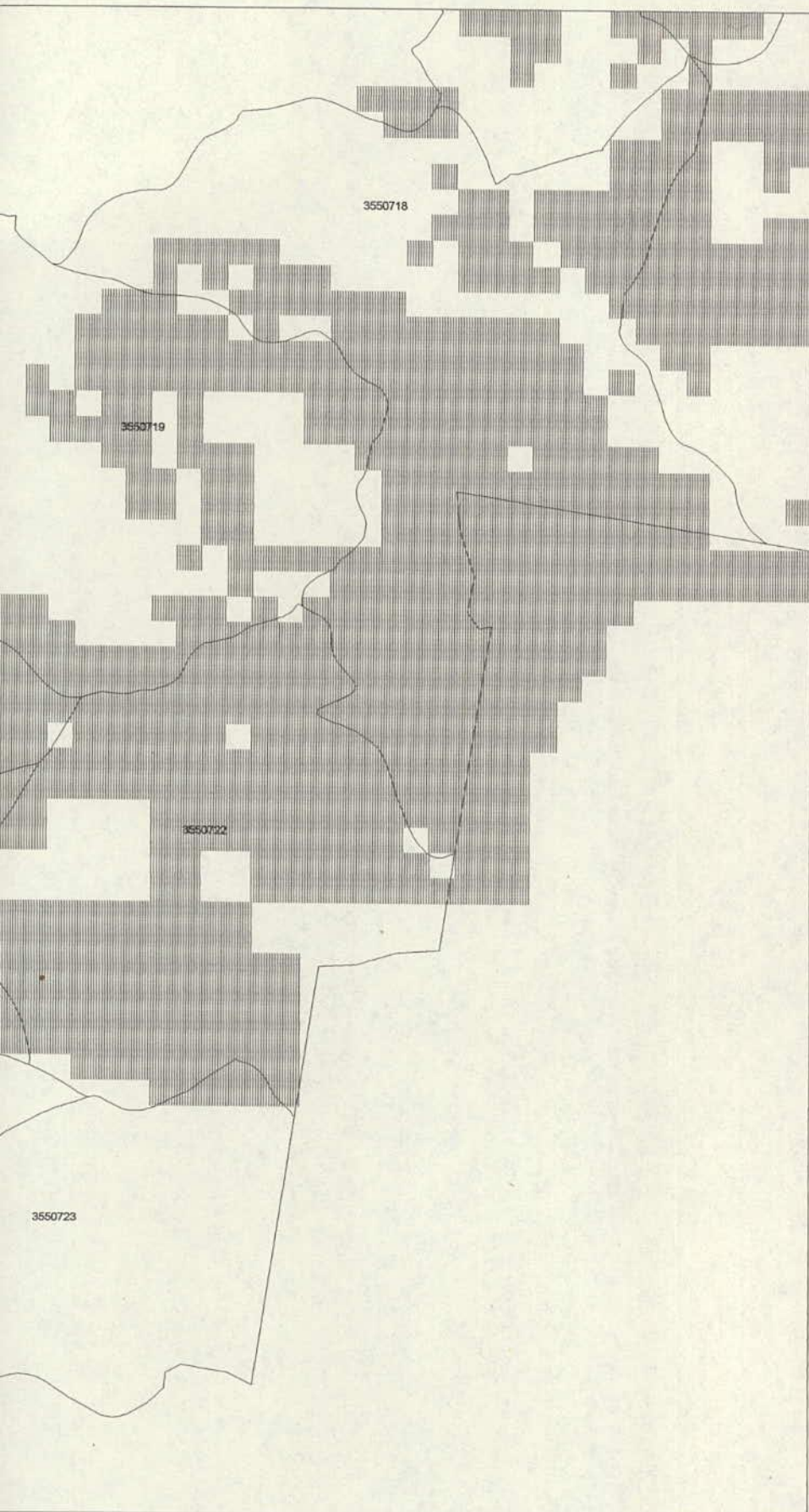
— Available Compartments

-  Powerful Owl 2-1
-  Powerful Owl 2-2
-  Powerful Owl 2-3
-  Powerful Owl 3-1
-  Powerful Owl 3-2
-  Powerful Owl 3-3
-  Powerful Owl 4-1
-  Powerful Owl 4-2
-  Powerful Owl 4-3

— Major Roads

— Negotiation Regions

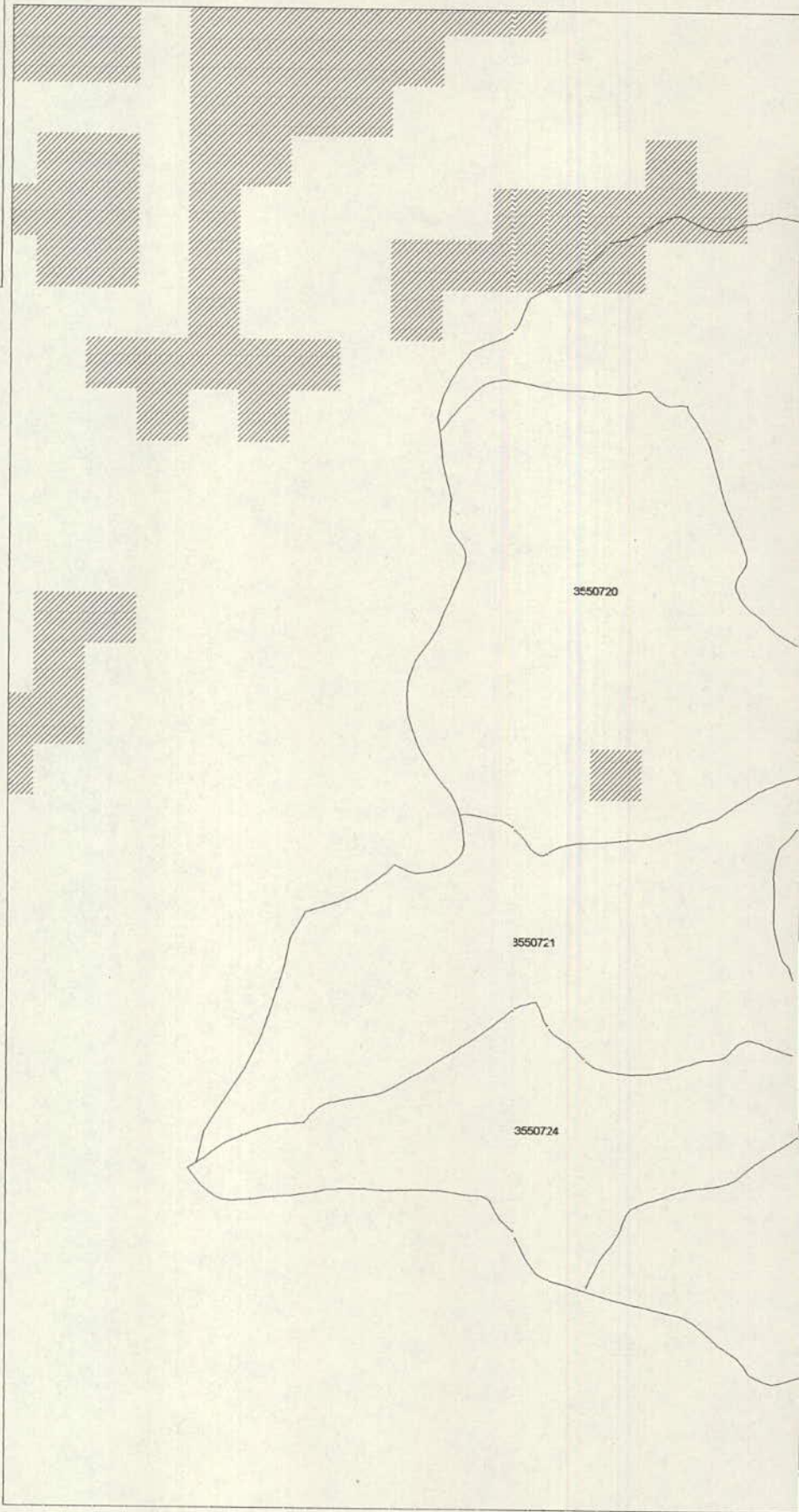




Available Compartments

- Brush-tailed Rock-wallaby 2-1
- Brush-tailed Rock-wallaby 2-2
- Brush-tailed Rock-wallaby 2-3
- Brush-tailed Rock-wallaby 3-1
- Brush-tailed Rock-wallaby 3-2
- Brush-tailed Rock-wallaby 3-3
- Brush-tailed Rock-wallaby 4-1
- Brush-tailed Rock-wallaby 4-2
- Brush-tailed Rock-wallaby 4-3









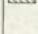
- Major Roads
- Negotiation Regions



BTRW

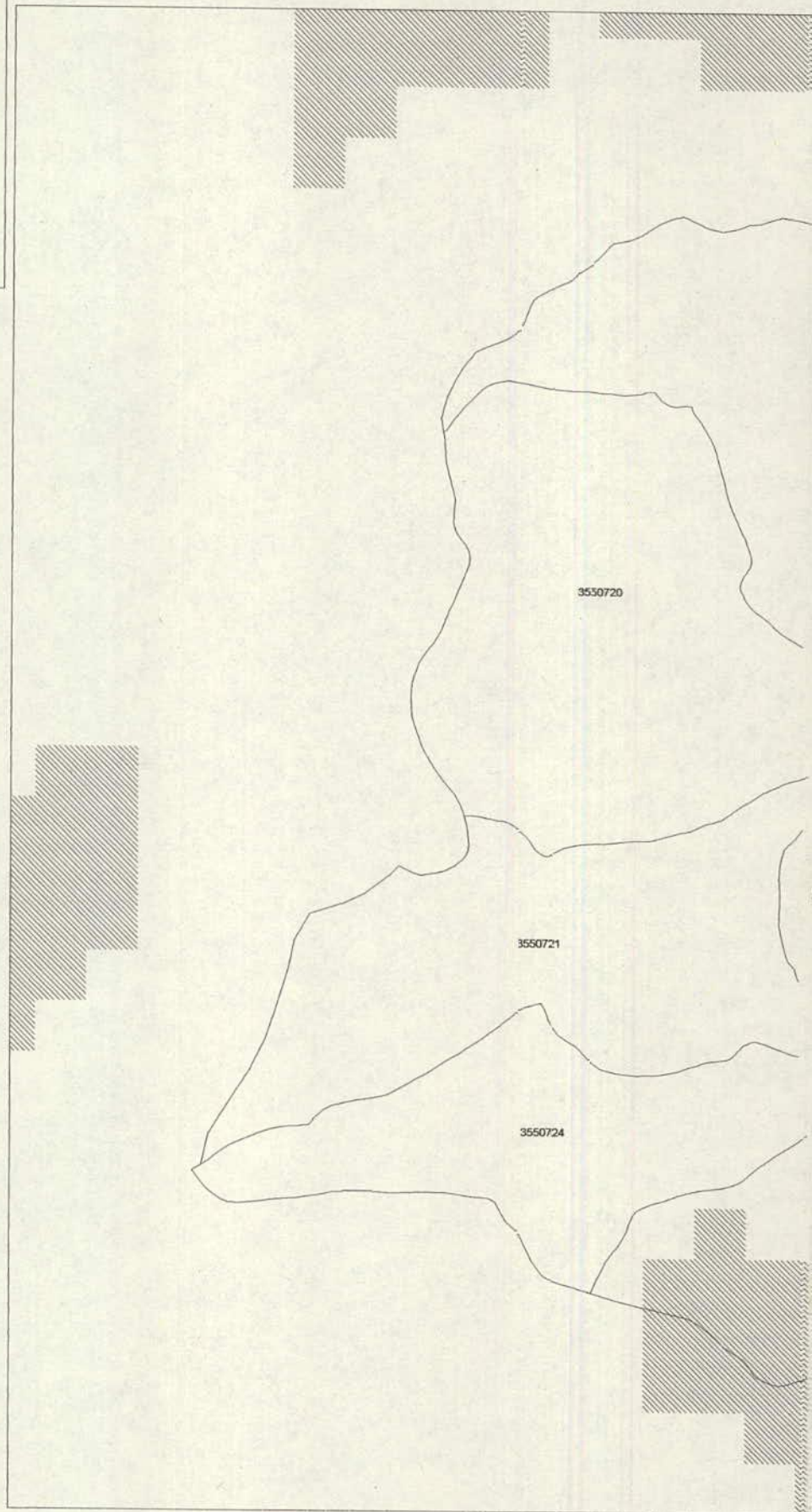


— Available Compartments

-  Eastern Chestnut Mouse 2-1
-  Eastern Chestnut Mouse 2-2
-  Eastern Chestnut Mouse 2-3
-  Eastern Chestnut Mouse 3-1
-  Eastern Chestnut Mouse 3-2
-  Eastern Chestnut Mouse 3-3
-  Eastern Chestnut Mouse 4-1
-  Eastern Chestnut Mouse 4-2
-  Eastern Chestnut Mouse 4-3

— Major Roads

— Negotiation Regions

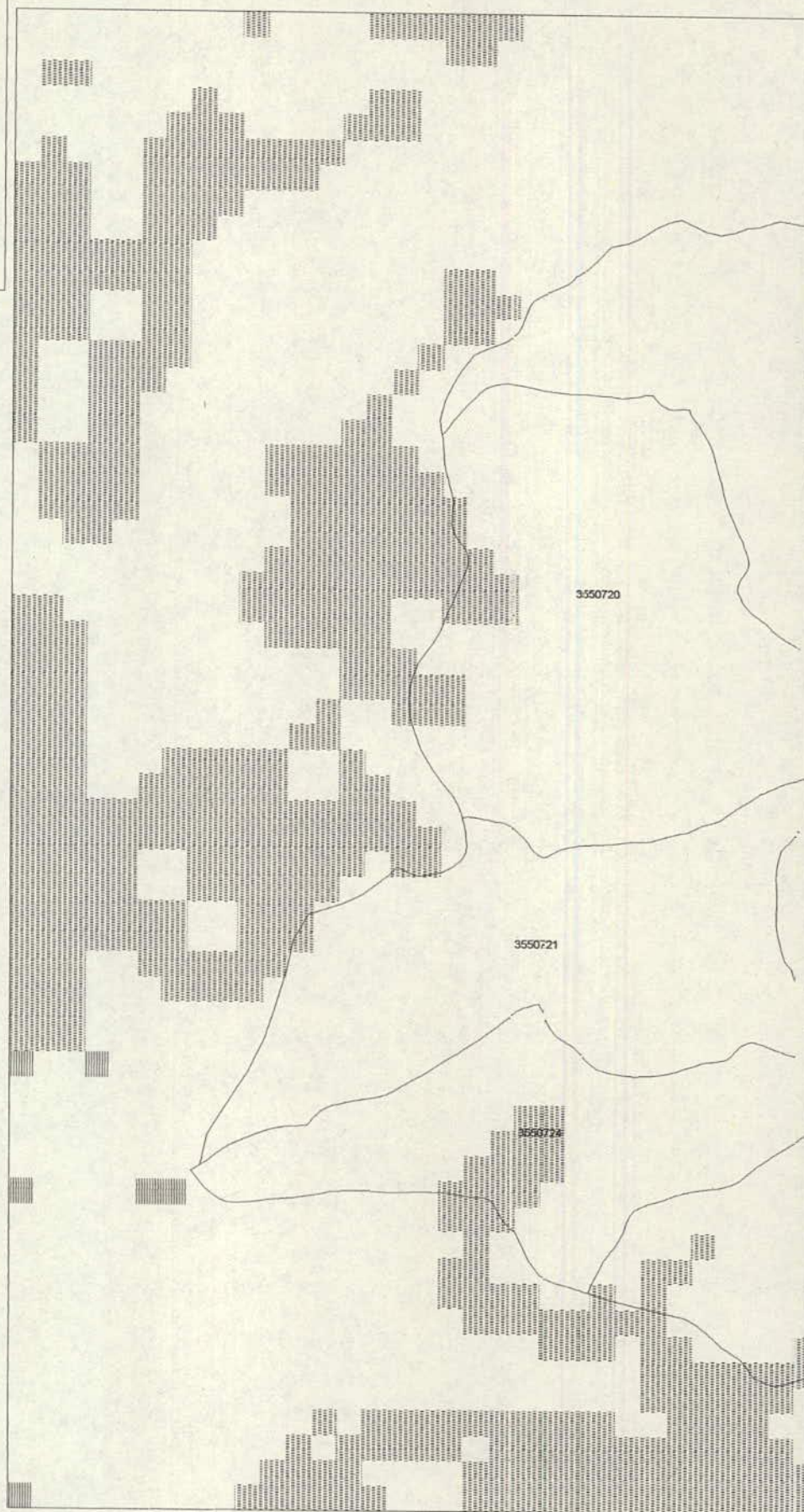


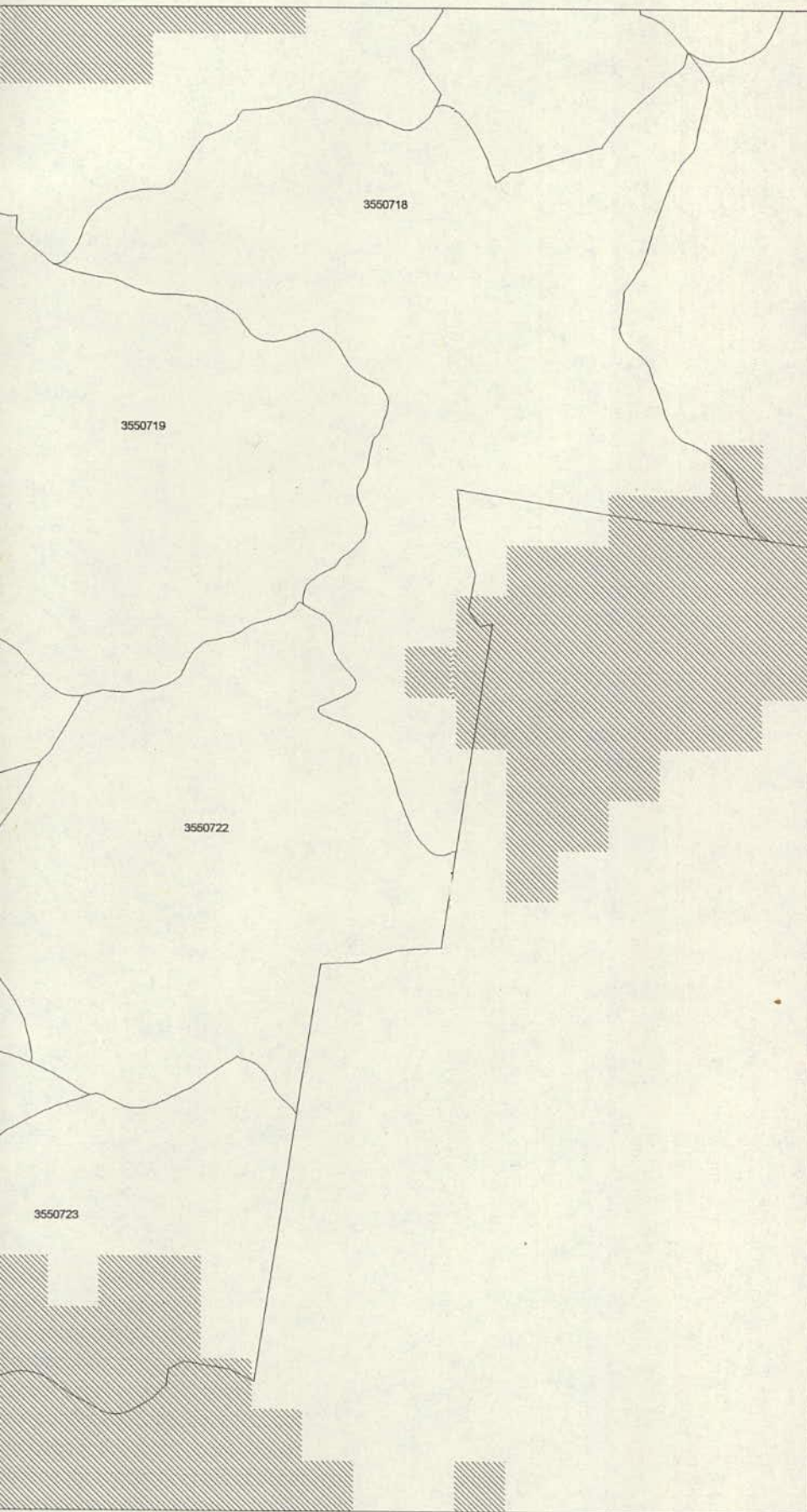
— Available Compartments

-  Greater Glider 6-1
-  Greater Glider 6-2
-  Greater Glider 6-3
-  Greater Glider 7-1
-  Greater Glider 7-2
-  Greater Glider 7-3
-  Greater Glider 8-1
-  Greater Glider 8-2
-  Greater Glider 8-3

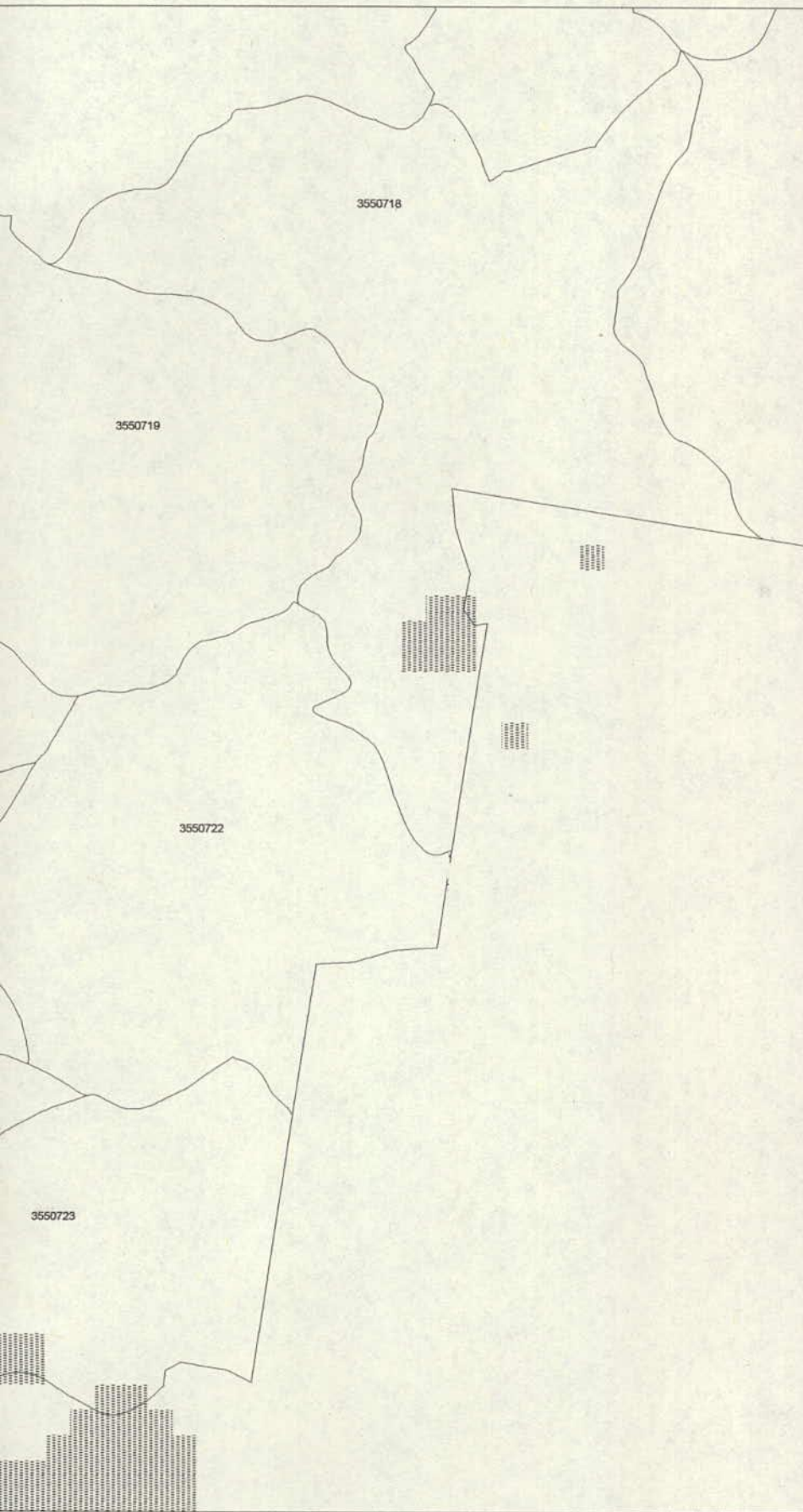
— Major Roads

— Negotiation Regions











E. C. Mase



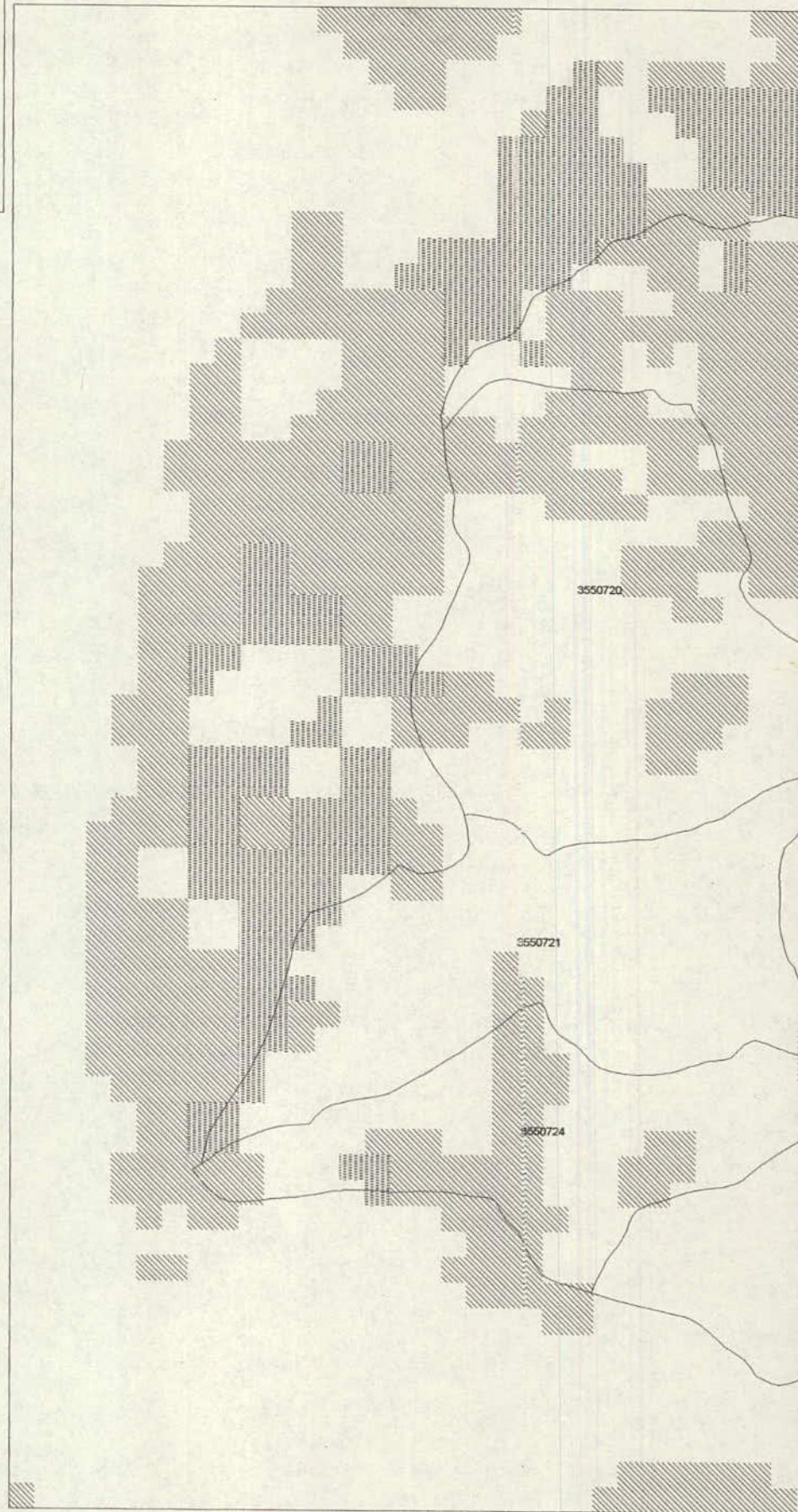
66.

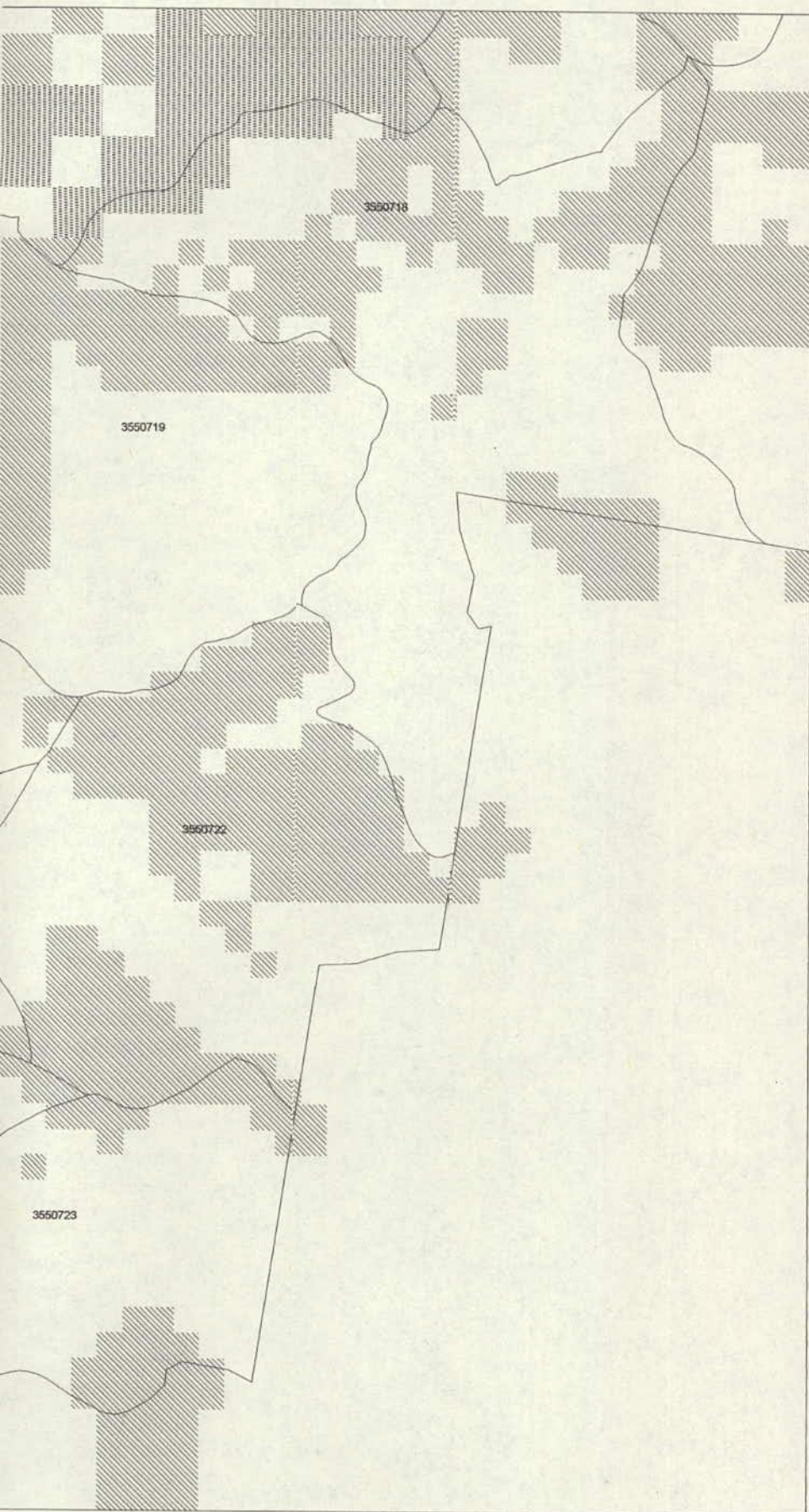
— Available Compartments

-  Koala 7-1
-  Koala 7-2
-  Koala 7-3
-  Koala 8-1
-  Koala 8-2
-  Koala 8-3

— Major Roads

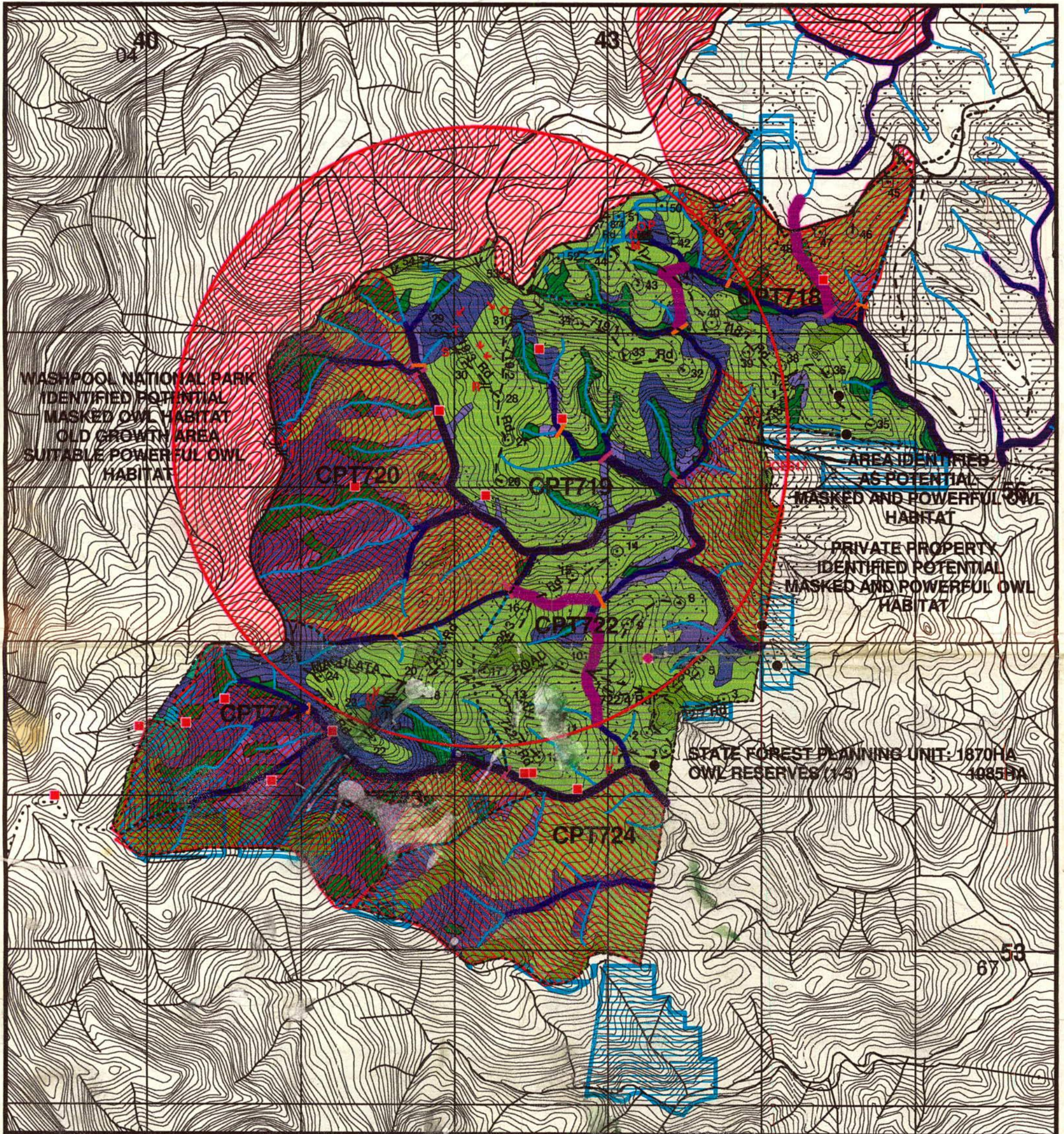
— Negotiation Regions





Koala.

NORTHERN REGION - CASINO DISTRICT
 OWL RESERVES
 WASHPOOL STATE FOREST
 WASHPOOL MAP SHEET
 SCALE 1: 25 000
 24/09/1997



BOUNDARIES

- Compartment Boundaries
- State Forest Planning Unit

STATE FOREST OWL RESERVES

- Masked Owl Reserve
- Powerful Owl Reserve
- Masked Owl Record
- Powerful Owl Record
- Sooty Owl Record

NPWS POTENTIAL HABITAT

- Masked Owl
- Powerful Owl
- Oldgrowth

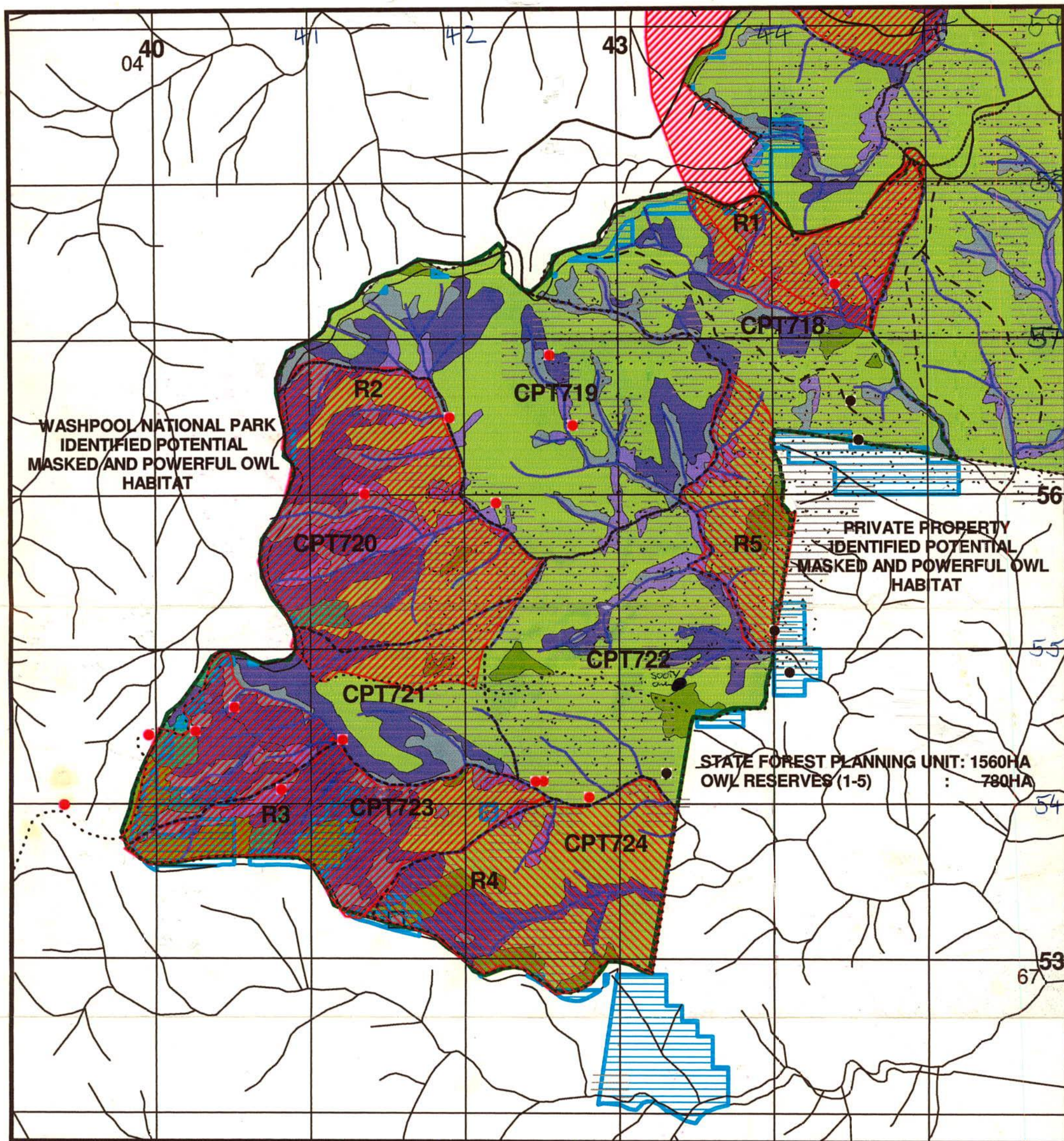
FOREST TYPES

- Grey Gum - Grey Ironbark - White Mahogany
- Spotted Gum / (Spotted Gum - Ironbark / Grey Gum)
- New England Blackbutt
- Brush Box
- Myrtle / (Viney Scrub)
- Tallowwood - Sydney Blue Gum

1 0 1 2 Kilometers

MN

NORTHERN REGION - CASINO DISTRICT
 OWL RESERVES
 WASHPOOL STATE FOREST
 WASHPOOL MAP SHEET
 SCALE 1: 25 000
 02/09/1997



BOUNDARIES

- Compartment Boundaries
- State Forest Planning Unit

STATE FOREST OWL RESERVES

- Masked Owl Reserve
- Powerful Owl Reserve
- Masked Owl Record
- Powerful Owl Record

NPWS POTENTIAL HABITAT

- Masked Owl
- Powerful Owl
- Oldgrowth

FOREST TYPES

- Spotted Gum / (Spotted Gum - Ironbark / Grey Gum)
- Grey Gum - Grey Ironbark - White Mahogany
- Tallowwood - Sydney Blue Gum

FOREST TYPES

- New England Blackbutt
- Brush Box
- Myrtle / (Viney Scrub)

1 0 1 2 3 Kilometers

MN



The powerful owl. Photo courtesy National Parks and Wildlife Service.

No threat to owl

Parks service claims in face of criticism

THE National Parks and Wildlife Service (NPWS) denied claims this week it had placed threatened owls, living on the edge of Washpool National Park, in jeopardy.

The Clarence Environment Centre (CEC), in a press release, said the NPWS had bungled plans to protect habitats of the sooty, masked and powerful owl by approving logging licences in 300 hectares of Washpool State Forest.

CEC spokesman Daniel Hall said there were very few areas left for the owls once the latest bout of logging was complete.

Most of what would be left, he said, was a large area which had been intensively logged recently and another area which had never been surveyed for the presence of owls.

Mr Hall said the NPWS was made aware of conservationists' concerns early in October but chose to "ignore" their advice.

"When the NPWS was originally considering owl reserves for the area, conservationists carried out their own surveys identifying the best habitat for

the owls based on State Forest fauna records.

"Conservationists spent days in the compartments ground truthing the information used to design the reserves and presented the NPWS with a detailed and comprehensive owl reserve design.

"NPWS failed to consider conservationists' advice and approved the flawed State Forest reserve design despite our efforts."

Mr Hall said the presence of rare owls in the area was so strong, State Forests-appointed experts didn't need to use the usual method of callback tapes to find the owls.

"The owls were hooting - it's an obvious stronghold for rare owls in the region," he said.

CEC secretary Michael Moriarty said the NPWS was not fulfilling its role in monitoring and assessing logging areas.

"We want the NPWS to take their jobs more seriously," he said.

But the service's northern zone manager of threatened species Gary Davey said the

CEC's concerns about owls in the Washpool were unfounded.

He said State Forests had been made to follow conservation protocols and identify any threat to species before NPWS approval.

State Forests, he said, was not allowed to touch several varieties of trees including large hollow habitat trees, recruitment trees which were nearing habitat age and riparian corridors which ran along waterways.

"The owls are adequately conserved - the long-term conservation of the owls will not be compromised," Mr Davey said.

"We wouldn't have licensed it if we thought that (risk to owls) was the case."

Mr Davey also denied the NPWS had failed to consider conservationists' advice.

"We looked at it in some detail," he said.

But, he said, it was decided the measures agreed to by State Forests provided adequate security for the owls.

He said it would be one of the things where "they say no and we say yes".

56K Voice/ Data/Fax Modem
\$229
 33.6K from \$120 comes with **FREE** "Quake" offer and **FREE** headset with microphone

FREE WITH PURCHASE OF TWO MODEMS YOUR CHOICE OF ONE OF THESE:

TA MOU
ILF-CARD
56K

Byte Back Multimedia
 47 Fitzroy St., Grafton. 6643 5115

Environmental manager quits

NYMBOIDA Shire Council's manager of environmental services David Whyte has resigned with 12 months remaining in his contract.

Mr Whyte's resignation takes effect on January 17.

However, he is currently

'Purple Haze' a 'must see'

PURPLE Haze is a must see for Graftonites.

If you don't see yourself on the big screen, you're bound to see a friend, relative, colleague or acquaintance.

The 75-minute "special cut" documentary will be screening today and tomorrow at the South Grafton Ex-Servicemen's Club at 11am, 1pm, 3pm, 5pm, 7pm and 9pm.

The documentary includes historic footage of early Jacaranda Festival celebrations in Market Square and contrasts the old-time "gaiety" with the revelry of 1996.

It's an invaluable insight into Grafton's "other side" and documents the trials and tribulations of the



Clarence Environment Centre Inc.

17 Skinner Street South Grafton NSW 2460 Tel/Fax: 02 6643 1863

Email: cesjc@nor.com.au

MEDIA RELEASE 5TH OF DECEMBER 1997

NPWS PLACE WASHPOOL OWLS IN JEOPARDY

Poor planning by State Forests and inaction on behalf of the National Parks and Wildlife Service has placed threatened owls living on the edge of Washpool National Park in jeopardy, according to Clarence Environment Centre spokesperson, Daniel Hall.

Both the NPWS and the EPA have recently approved licenses for the logging of compartments in Washpool State Forest. Mr Hall said that all three rare and threatened owls known in the region have been identified in the Washpool Compartments and that plans to protect their habitat have been bungled.

State Forests' owl reserve consists of a large area of forest which has recently been intensively logged and another large area which has never been surveyed for the presence of owls," he said.

The NPWS was made aware of conservationists' concerns early in October but chose to ignore their advice according to Mr Hall.

"When the NPWS was originally considering owl reserves for the area, conservationist carried out their own surveys, identifying the best habitat for the owls based on State Forest fauna records. Conservationists spent days in the compartments ground truthing the information used to design the reserves and presented the NPWS with a detailed and comprehensive owl reserve design."

"NPWS failed to consider conservationists advice and approved the flawed State Forest reserve design despite our efforts." Mr Hall said.

Mr Hall said fauna experts who carried out surveys didn't even have to play callback tapes to identify owls in the Washpool Compartments. "The owls were hooting" he said. "The area is an obvious stronghold for rare owls in the region."

"If State Forests and National Parks are serious about managing forests in a way which is ecologically sustainable and considers the needs of native flora and fauna, then they have to actually be doing so, rather than continuing to repeat the mistakes of the past." he said.

For more information contact Daniel on (02) 6643 1863

I

CONSTITUTION OF YURAYGIR LANDCARE GROUP INCORPORATED

1. Name

The name of the association shall be Yuraygir Landcare Group Incorporated (referred to in these rules as "the association").

2. Objectives

The objectives of the association shall be:

- a) To restore areas that have been affected by exotic weed species to the detriment of the local vegetation.
- b) To promote and conserve the diversity of native flora and fauna while protecting and assisting the recovery of threatened and endangered species.
- c) To recognise, protect and where appropriate regenerate areas of unique habitat in such a manner as to minimise present and future external influence.
- d) To use and promote benign, low impact, ecologically sustainable methods of weed eradication and site regeneration.
- e) To provide understanding and education to members of landcare groups, students and the public in the use of benign, low impact, ecologically sustainable methods of weed eradication and site regeneration.
- f) To ensure that all activities are carried out in a manner that recognises and minimises possible hazards to members and environmental processes.
- g) To provide appropriate, safe, responsible and aesthetically pleasing public access and recreational facilities.
- h) To consult with and recognise the rights and wishes of local Aboriginal communities regarding areas of cultural or historical significance.
- i) To work co-operatively with other organisations and community groups sharing the objectives and aspirations of the Yuraygir Landcare Group.

NEFA

North East Forest Alliance

C/- 123 Keen St Lismore 2480 Phone/Fax (02) 6622 4737

Donella Anderson
National Parks and Wildlife Service,
Northern Zone Coffs Harbour.

~~29 September~~ 1997
3 October

RE: OWL RESERVES IN WASHPOOL SF, CPTS. 718-724.

Dear Donella,

The North East Forest Alliance has surveyed compartments 718 - 724 Washpool State Forest, Casino MA, to check on the adequacy of the owl reserve plan proposed by State Forests.

A pre-logging fauna survey was conducted by State Forests, the results of which show that Powerful and Masked Owls are currently using the area. Our own survey identified Sooty Owls in compartments 718 and 722.

The records from State Forests' survey and the NEFA survey are from calls that were heard naturally (except the first evening of the SF survey) without playback prompting, indicating that the owls are actually using the areas where the records are shown. 17 Powerful Owl records, 5 Masked Owl records and 2 Sooty Owl records were obtained in the surveys.

The SF report notes that there is a potential Masked Owl nest site (from calls heard in the early evening) in the south east corner of cpt. 722. It also notes that the records seem to indicate 2 pairs of Powerful Owl and associated home ranges - 1 pair in cpts 719, 718 & part 722, 720 (north) and; 1 pair in cpts 721, 722 & (723, 724) (south).

The owls are winter breeding and it is likely that the owls in this area are currently breeding or rearing young, making this area of huge significance. Any disturbance to the area will effect the food resource of the owls and will reduce the chances of survival of the young owls.

The recommendation below is based on the locations of the owl records, the locations of their prey species and on the areas of good habitat identified in our survey and on the IAP GIS modelled habitat maps.

The stream side buffers are where the majority of the owl records are located. The buffers seem to have been less heavily logged in the past and therefore are more intact. The gullies are also more moist with a more developed understorey providing roost sites for the owls. All of the Powerful Owl records come from stream line buffers. The two Sooty Owl records are also from these stream buffers.

The south-east corner of cpt. 718 was chosen because of the presence of Masked Owls, Greater Gliders and Yellow-bellied Gliders. There are 4 identified feed trees of Yellow-bellied Gliders (NEFA survey), and records of calls (SF survey) in this area. This area is open grassy woodland with well developed rainforest gullies providing good habitat for small macropods as well as the owls and gliders. With the Yellow-bellied Glider protocol in place, the area is likely to become unviable for logging. Most of this area is modelled Powerful and Sooty Owl habitat.

The north eastern catchment of the main gully system in compartment 719 was chosen because of the need to reserve the upper slopes as well as the gully lines as the prey species of the owls are often more abundant on the mid to upper slopes. Two Powerful Owl records are from this gully system. Most of the area is modelled Powerful and Sooty Owl habitat.

Most of the area in the two State Forests proposed reserves in compartment 718 is modelled Powerful and Sooty Owl habitat. These areas are included in our proposal.

Compartment 720 has been left off this proposal as it has been heavily logged in the past and left with few large trees and a thick weedy understorey, unsuitable habitat for the owls and their prey species. About one quarter of this compartment is modelled Powerful and Sooty Owl habitat, most of it is included in our proposed stream buffers. Two Powerful Owl records are from this compartment, they are included in the stream buffers.

Compartment 723 and the western half of 724 has been left off this proposal as they have only small areas of modelled Masked Owl habitat and no modelled Powerful Owl habitat. The Powerful Owl records from this area are included in the stream buffers.

The timber needs of State Forests were taken into account and therefore significant areas of modelled habitat are left available for logging despite the conservation protocol requirement for areas of potential habitat to be included in the owl reserve.

The revised map of State Forests' proposed owl reserves is not adequate and has errors in it. The compartment numbers for 723 and 724 are mixed up, some first order streams are not marked, forest type 23/26 - myrtle/viney scrub and 163 - New England Blackbutt have been mixed up and it seems that areas shown as Powerful Owl reserve are more appropriately Masked Owl reserve and vice versa. Many of the owl records are slightly out of place (see original SF report for accurate locations).

As was shown recently in compartment 671, Ewingar SF, where mapping errors led to an area of old growth and an area of Masked Owl habitat being logged, simple mapping mistakes can lead to big mistakes in the field.

The State Forests proposed reserves seem to be based on timber requirements. Compartment 720 was recently logged and has no timber left in it, compartments 723 and 724 are not on the order of working and were not intended to be harvested and the reserve in the south of compartment 718 is very steep. Compartments 720, 723 and 724 have very little modelled habitat for the owls and were simply a convenient way of making up the required area of owl reserve.

Recommendation

NEFA recommends that all first order streams be protected by a 50 metre wide buffer each side of the stream, and all second and third order streams be protected by a 100 metre wide buffer each side of the stream. In addition to this the main gully line flowing east through compartments 721, 723 and 724 be protected by a 150 metre buffer each side of the stream.

Other areas that we recommend be protected are the south east corner of compartment 718 joining the two reserves proposed by State Forests in cpt. 718; the north eastern catchment of the main gully system in cpt. 719; and the south west south west corner of cpt. 721 and eastern half of cpt. 724 (currently proposed by State Forests). See attached map.

It is recommended that the Marking Foreman be familiar with the identification of owl roost and nest sites, from the "white wash" dropped by the owls onto the ground below.

Yellow-bellied Gliders

The pre-logging surveys have shown that these compartments are also of great value to Yellow-bellied Gliders. Our survey identified 8 feed trees (mainly Spotted Gum and 1 Grey Gum), 4 are in the south-east corner of cpt.718, spread evenly throughout the area we have recommended be protected.

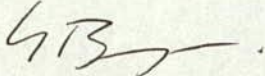
The feed notches are very varied in shape and size. Photos of the feed notches will be posted to both NPWS and State Forests of Casino.

It is recommended that the Marking Foreman be familiar with the different types of feeding notches of the Yellow-bellied Gliders, as shown in the photos.

A further report of fauna sitings, including the location of the V-notch trees, will be sent early next week.

Please let me know of any decisions regarding these compartments as they are made.

Yours sincerely,

A handwritten signature in dark ink, appearing to be 'GB' followed by a stylized flourish.

Georgia Beyer.

Compartments 718-724 Washpool State Forest Casino M.A.



NEFA's proposed Owl Reserves.

3 October 97

NORTH EAST FOREST ALLIANCE
123 KEEN ST
LISMORE 2480

National Parks & Wildlife Service
Fax 516 187

Attention: Donella Anderson.



Here is our proposal for Owl reserves
in Washpool SF.

4 pages to follow

Georgia Beyer
Ph/fax 02 66 224 737

30 October 1997

Attention: Ross Sigley

State Forests Casino

Fax: 625826

Here is our proposal for owl reserves in
Washpool SF cpts. 718-724.

4 pages to follow.

Georgia Beyer
Ph/fax (02) 66 224 737



BRUSH-TAILED PHASCOGALE

A VULNERABLE AND RARE SPECIES

NEFA

North East Forest Alliance

C/ 123 Keen Street Lismore 2480. Ph/Fax (02) 6622 4737

6 October 1997

Donella Anderson
Threatened Species Unit
National Parks and Wildlife Service,
Northern Zone, Coffs Harbour.

Dear Donella,

Following are records of fauna sightings in Washpool State Forest, compartments 718 - 724, Casino MA from 26 - 31 September 1997.

Date	Species	Observation Type	AMG	Comments
31/9	Yellow-bellied Glider	Tree with chewed holes	444000 6756900	On Spotted Gum. Marked in field with pink tape.
31/9	Greater Glider	Visual sighting	444300 6756850	
31/9	Glossy Black Cockatoo	Feed tree	444500 6756800	Allocasurina with many chewed cones, marked in field.
31/9	Yellow-bellied Glider	V-notch tree	444600 6756750	Grey Gum, marked in field.
31/9	Glossy Black Cockatoo	Feed tree	444400 6756700	Allocasurina with many chewed cones, marked in field.
31/9	Yellow-bellied Glider	V-notch tree	444400 6756700	Spotted Gum, marked in field.
31/9	Sooty Owl	Call	444250 6756600	
31/9	Yellow-bellied Glider	V-notch tree	444350 6756600	Spotted Gum, marked in field.
31/9	Yellow-bellied Glider	Sap feed tree	444500 6756200	Spotted Gum, marked in field.
				Large chewed patches with running sap.
31/9	Yellow-bellied Glider	Tree with chewed holes	442350 6757400	Spotted Gum, marked in field.
26/9	Red-legged Pademelon	Visual sighting	440800 6756850	
26/9	2 Red-necked Pademelons	Visual Sighting	440700 6755700	
26/9	2 Red-necked Pademelons	Visual Sighting	440750 6755400	
26/9	2 Red-necked Pademelons	Visual Sighting	440900 6755000	
26/9	Common Ringtail Possum	Visual Sighting	440650 6754900	
26/9	Greater Glider	Visual Sighting	440450 6754850	
30/9	Powerful Owl	Call	442800 6754100	
31/9	3 Glossy Black Cockatoos	Visual Sighting	440850 6755200	
30/9	Boobcock	Call	443150 6753950	
19/8	Sooty Owl	Call	444250 6756600	

All observations were made by Georgia Beyer, with the help of an excellent volunteer survey team, G Swindells, J Bowden, D Hall, T Thorncraft, J Hall, Av, R Crane, K Wagner, Sheoke.

On the first night of the survey on Washpool Road between cpts 718- 724 and the camping ground on Washpool Creek, 2 Yellow-bellied Gliders, an adult and sub-adult, were spotted in a recently logged area within Washpool SF. The adult quickly disappeared into the branches above but the sub-adult continued clinging to the side of the trunk of a Spotted Gum, chewing a small hole in the bark. Yellow-bellied Glider scats were collected the next day and photographs taken of the chews in the trunk. The surveys were then focused on identifying chew marks similar to those that were made while we watched. No AMG was taken for this site although it is still marked in the field with pink tape.

Attached are photographs of the various chew marks that were identified on our survey. These photographs will also be sent to State Forests of Casino for use by the marking foreman as discussed in my previous letter regarding these compartments.

Frogs

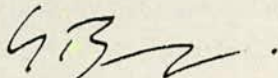
A frog survey was carried out on Desert Creek at the camping area. Following are the records of this survey.

Date	Species	Observation Type	AMG
26/9	Mixophyes fasciolatus	Visual identification	444450 6761950
26/9	Mixophyes iteratus	Visual identification	444450 6761950
26/9	Litoria verreauxii	Call	444450 6761950
26/9	Litoria pearsoniana	Visual identification	444450 6761950
26/9	Litoria lesueuri	Visual identification	444450 6761950
26/9	Litoria fallax	Visual identification	444450 6761950

All of the observations were made by Tim Thorncraft.

The location of the threatened species will be sent to State Forests.

Yours sincerely,



Georgia Beyer.

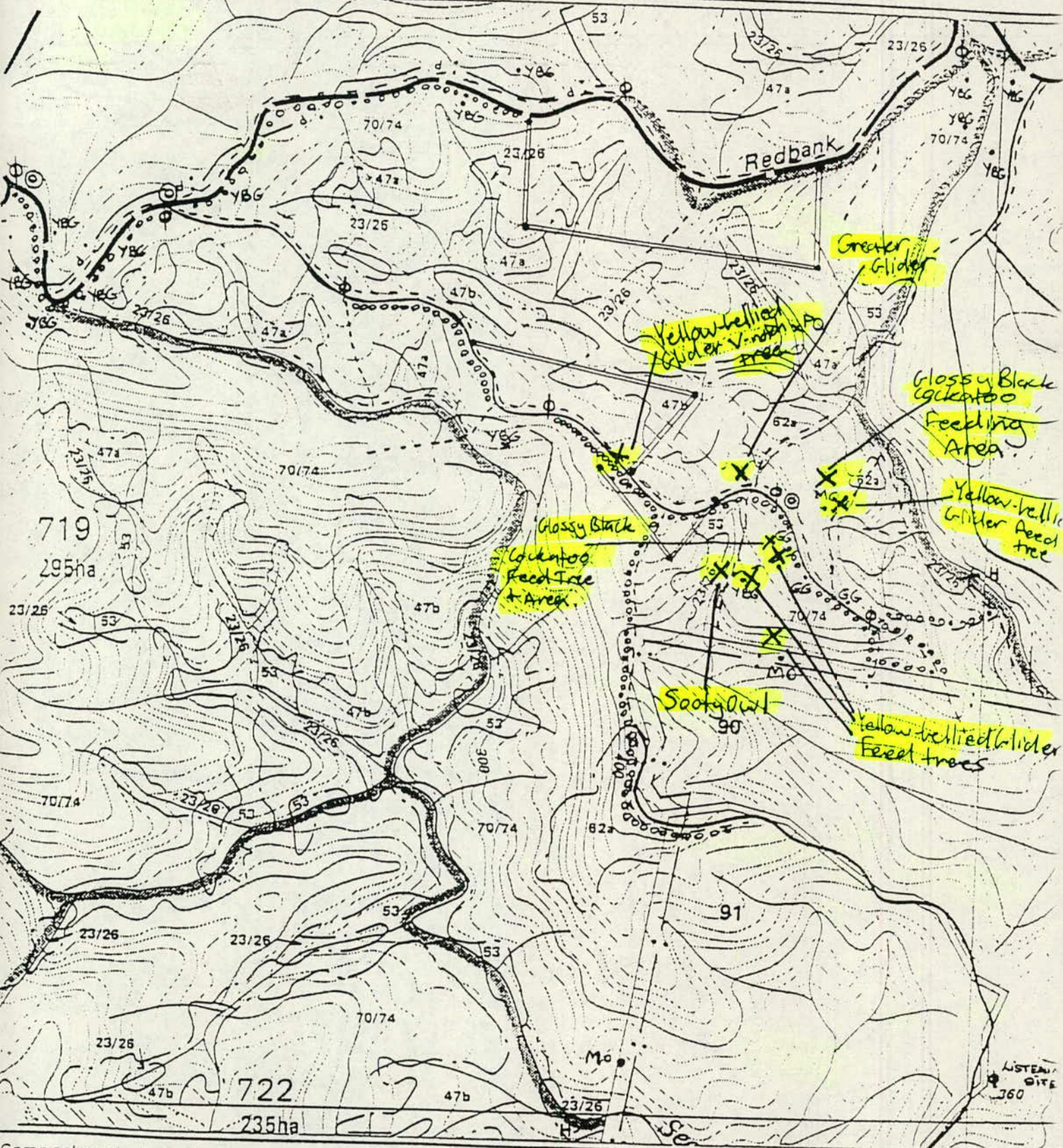
Compartment 718

Scale -- 1:15 000

CS / 355

Contour interval 10m

G N



Compartment boundary

Filter strips

Protection strips

Road, minor road, dump site.

Wet weather dumps shown in red

⊙ - ANABAT SITE.

⊕ - Playback Site.

..... walking Spotlight surveys

----- walked flora & fauna traverses (random).

—— integrated Koala transect.

P.O. - Powerful Owl

M.O. - Masked Owl.

YG - Yellow-bellied Glider

GG - Greater Glider.

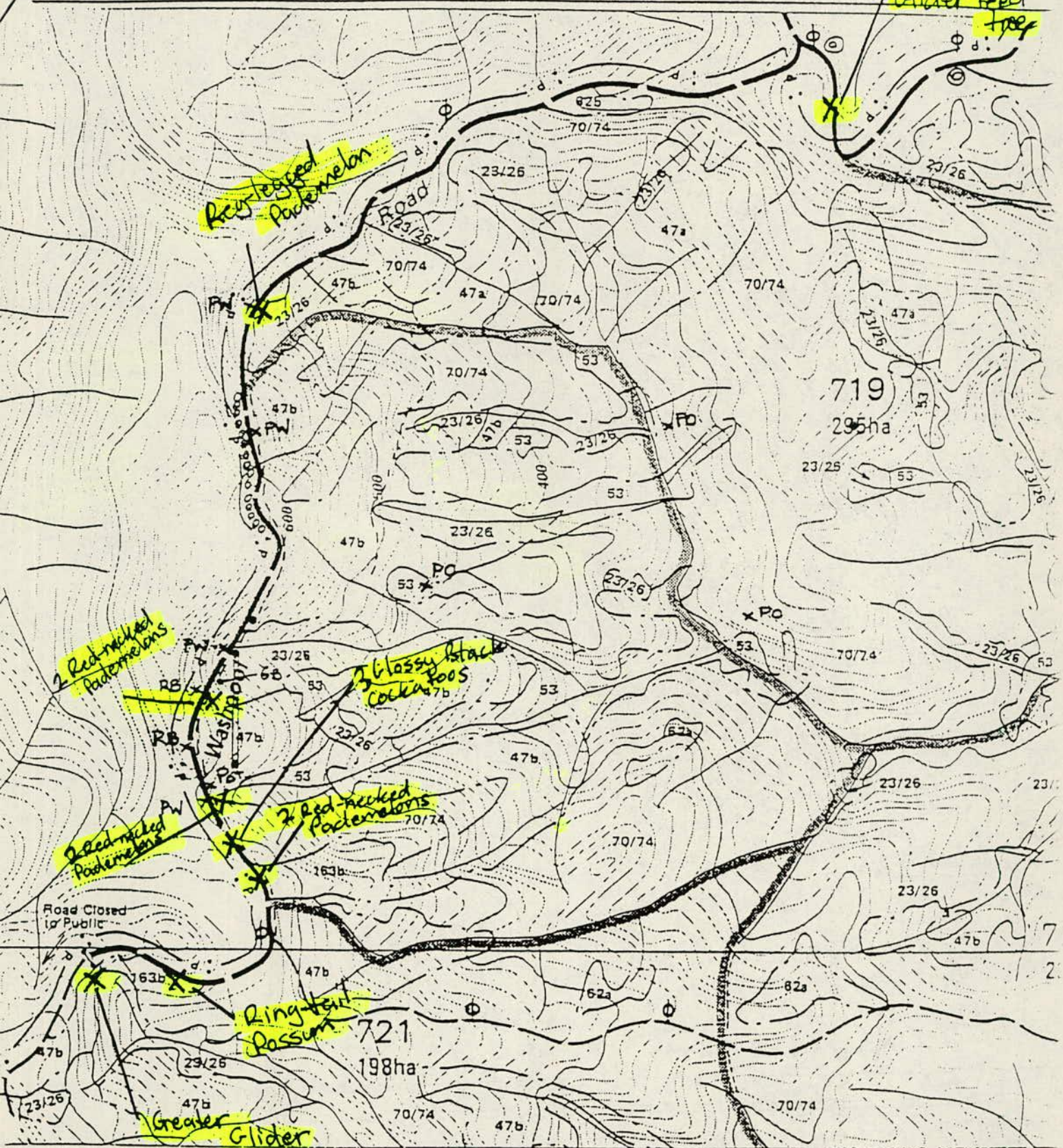
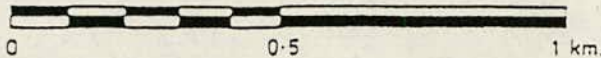
x H - HARP TRAP SITE.

Compartment 720

Scale — 1:15 000

CB/355

Contour interval 10 m



Compartment boundary

Filter strips

Protection strips

Road, minor road, dump site

Wet weather dumps shown in red

φ = Playback Site. ⊙ ANABAT SITE.

Special emphasis

----- Random flora & fauna transect.
———— Integrated Koala Transect.

Po = Powerful Owl

PW = Parma Wallaby

Pot = Potoroo

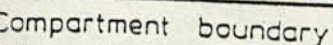
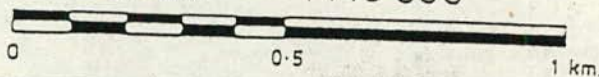
RB = Rufous Bettong

GB = Glossy Black Cockatoo

↑
G N

CE / 355

Contour interval 10 m



Filter strips

Protection strips

Road , minor road , dump site

Yet weather dumps shown in red

= Playback Site. x = Harp Trap.

Special emphasis

ooooooo - walking Spotlight Transect.

----- random flora & fauna transect.

- Integrated Kuala Transect.

PO - Powerful Owl

YBG = Yellow Bellied Glider.

GG: Greater Glider.

GB = Glossy-black Cockatoo
(feed site).

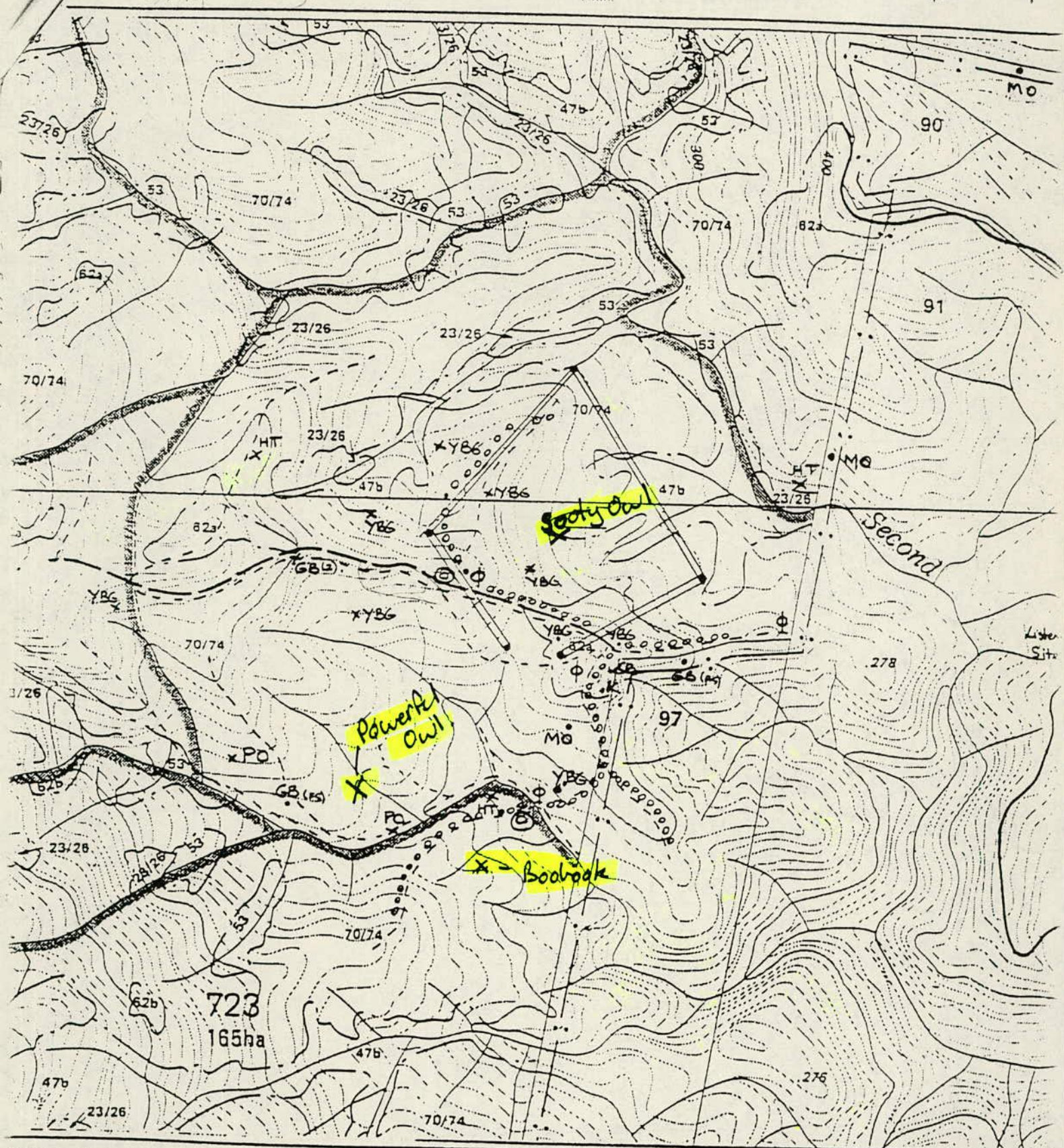
Compartment 722

Scale — 1:15 000

CB/355

Contour interval 10m

G N



Compartment boundary

Filter strips

Protection strips

Road, minor road, dump site

Wet weather dumps shown in red

Playback Site.

⊙ ANNEAT SITE.

Special emphasis

oooooo - Walking Spotlight Transect

random flora & fauna transect

Integrated Koala Transect.

PO = Powerful Owl

MO = Masked Owl

YBG = Yellow-bellied Glider

SO = SOOTY OWL (GOORAIN)

GB = Glossy Black Cuckoo

HT = HARP TRAP SITE.

NEFA

North East Forest Alliance

C/ 123 Keen Street Lismore 2480. Ph/Fax (02) 6622 4737

6 October 1997

Ross Sigley
State Forests of NSW
Casino

Dear Ross,

Following are records of fauna sitings in Washpool State Forest, compartments 718 - 724, Casino MA from 26 to 31 September 1997.

Date	Species	Observation Type	AMG	Comments
31/9	Yellow-bellied Glider	Tree with chewed holes	444000 6756900	On Spotted Gum. Marked in field with pink tape.
31/9	Greater Glider	Visual sighting	444300 6756850	
31/9	Glossy Black Cockatoo	Feed tree	444500 6756800	Allocasurina with many chewed cones, marked in field.
31/9	Yellow-bellied Glider	V-notch tree	444600 6756750	Grey Gum, marked in field.
31/9	Glossy Black Cockatoo	Feed tree	444400 6756700	Allocasurina with many chewed cones, marked in field.
31/9	Yellow-bellied Glider	V-notch tree	444400 6756700	Spotted Gum, marked in field.
31/9	Sooty Owl	Call	444250 6756600	
31/9	Yellow-bellied Glider	V-notch tree	444350 6756600	Spotted Gum, marked in field.
31/9	Yellow-bellied Glider	Sap feed tree	444500 6756200	Spotted Gum, marked in field.
				Large chewed patches with running sap.
31/9	Yellow-bellied Glider	Tree with chewed holes	442350 6757400	Spotted Gum, marked in field.
26/9	Red-legged Pademelon	Visual sighting	440800 6756850	
26/9	Common Ringtail Possum	Visual Sighting	440650 6754900	
26/9	Greater Glider	Visual Sighting	440450 6754850	
30/9	Powerful Owl	Call	442800 6754100	
31/9	3 Glossy Black Cockatoos	Visual Sighting	440850 6755200	

All observations were made by Georgia Beyer, with the help of an excellent volunteer survey team.

On the first night of the survey on Washpool Road between cpts 718- 724 and the camping ground on Washpool Creek, 2 Yellow-bellied Gliders, an adult and sub-adult, were spotted in a recently logged area within Washpool SF. The adult quickly disappeared into the branches above but the sub-adult continued clinging to the side of the trunk of a Spotted Gum, chewing a small hole in the bark. Yellow-bellied Glider scats were collected the next day and photographs taken of the chews in the trunk. The surveys were then focused on identifying chew marks

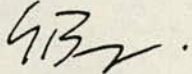
similar to those that were made while we watched. No AMG was taken for this site although it is still marked in the field with pink tape.

Attached are photographs of the various chew marks that were identified on our survey. These photographs are for use by the marking foreman as discussed in my previous letter regarding these compartments.

Also attached is a map of the records.

These records have also been sent to NPWS Northern Zone.

Yours sincerely,

A handwritten signature in dark ink, appearing to be 'GB' followed by a stylized flourish.

Georgia Beyer.

NEFA

North East Forest Alliance

C/ 123 Keen Street Lismore 2480. Ph/Fax (02) 6622 4737

6 October 1997

Donella Anderson
Threatened Species Unit
National Parks and Wildlife Service,
Northern Zone, Coffs Harbour.

Dear Donella,

Following are records of fauna sightings in Washpool State Forest, compartments 718 - 724, Casino MA from 26 - 31 September 1997.

Date	Species	Observation Type	AMG	Comments
31/9	Yellow-bellied Glider	Tree with chewed holes	444000 6756900	On Spotted Gum. Marked in field with pink tape.
31/9	Greater Glider	Visual sighting	444300 6756850	
31/9	Glossy Black Cockatoo	Feed tree	444500 6756800	Allocasurina with many chewed cones, marked in field.
31/9	Yellow-bellied Glider	V-notch tree	444600 6756750	Grey Gum, marked in field.
31/9	Glossy Black Cockatoo	Feed tree	444400 6756700	Allocasurina with many chewed cones, marked in field.
31/9	Yellow-bellied Glider	V-notch tree	444400 6756700	Spotted Gum, marked in field.
31/9	Sooty Owl	Call	444250 6756600	
31/9	Yellow-bellied Glider	V-notch tree	444350 6756600	Spotted Gum, marked in field.
31/9	Yellow-bellied Glider	Sap feed tree	444500 6756200	Spotted Gum, marked in field.
				Large chewed patches with running sap.
31/9	Yellow-bellied Glider	Tree with chewed holes	442350 6757400	Spotted Gum, marked in field.
26/9	Red-legged Pademelon	Visual sighting	440800 6756850	
26/9	2 Red-necked Pademelons	Visual Sighting	440700 6755700	
26/9	2 Red-necked Pademelons	Visual Sighting	440750 6755400	
26/9	2 Red-necked Pademelons	Visual Sighting	440900 6755000	
26/9	Common Ringtail Possum	Visual Sighting	440650 6754900	
26/9	Greater Glider	Visual Sighting	440450 6754850	
30/9	Powerful Owl	Call	442800 6754100	
31/9	3 Glossy Black Cockatoos	Visual Sighting	440850 6755200	
30/9	Boobook	Call	443150 6753950	
19/8	Sooty Owl	Call	444250 6756600	

All observations were made by Georgia Beyer, with the help of an excellent volunteer survey team, G Swindells, J Bowden, D Hall, T Thorncraft, J Hall, Av, R Crane, K Wagner, Sheoke.

On the first night of the survey on Washpool Road between cpts 718- 724 and the camping ground on Washpool Creek, 2 Yellow-bellied Gliders, an adult and sub-adult, were spotted in a recently logged area within Washpool SF. The adult quickly disappeared into the branches above but the sub-adult continued clinging to the side of the trunk of a Spotted Gum, chewing a small hole in the bark. Yellow-bellied Glider scats were collected the next day and photographs taken of the chews in the trunk. The surveys were then focused on identifying chew marks similar to those that were made while we watched. No AMG was taken for this site although it is still marked in the field with pink tape.

Attached are photographs of the various chew marks that were identified on our survey. These photographs will also be sent to State Forests of Casino for use by the marking foreman as discussed in my previous letter regarding these compartments.

Frogs

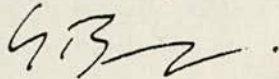
A frog survey was carried out on Desert Creek at the camping area. Following are the records of this survey.

Date	Species	Observation Type	AMG
26/9	Mixophyes fasciolatus	Visual identification	444450 6761950
26/9	Mixophyes iteratus	Visual identification	444450 6761950
26/9	Litoria verreuxii	Call	444450 6761950
26/9	Litoria pearsoniana	Visual identification	444450 6761950
26/9	Litoria lesueri	Visual identification	444450 6761950
26/9	Litoria fallax	Visual identification	444450 6761950

All of the observations were made by Tim Thorncraft.

The location of the threatened species will be sent to State Forests.

Yours sincerely,



Georgia Beyer.

FACSIMILE TRANSMISSION

To NPWS TSU PO BOX 914 COFFS HARBOUR 2450
NEFA 123 KEEN ST LISMORE 2480

Attention Donella Andersen
Georgia Beyer

Date 24/09/97

Your Fax 516187 (NPWS)
224737 (NEFA)

Our Fax 62 5826

From Peter St.Clair Forester - for
District Forester - CASINO

Phone (066) 62 4499

No of Pages 2 (including this cover page)

your ref:wash718c:daa:4575

Message

RE Washpool SF Cpts 718-722

Revised mapping of Owl Reserves

Thank you for your letter regarding the above proposal.

Based on your suggestions we have relocated a 2km radius circle to the position shown and submit a map.

This enables considerable owl reserves based on mapped Masked owl and Old Growth in the National Park to be added to the Owl Reserve system which is now 58% of the Planning unit area.

There is little difference between the forest types suitable for either owl based on the record locations we are obtaining.

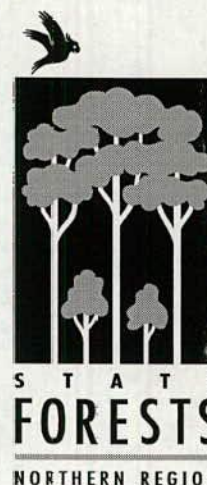
In addition we point out that on a landscape basis the extensive areas of NP to West and South make the area of State Forest to be harvested relatively small. The impact of the Owl Reserves on the cpts has been considerable and exceed the 20% figure mentioned in the Conservation Protocols.

We are using the Landscape approach in Ewingar SF.

We await your confirmation. Thank you.

PS. Sooty Owl record added in Cpt 722. (Source: G.Beyer)

Draft NP Attached.



State Forests of
New South Wales

Casino District

PO Box 688
CASINO NSW 2470
Phone (066) 624499